



# **FLOORING** SOLUTIONS

---



<b>NYLON COLLECTION</b>	<b>4 - 66</b>
<b>POLYPROPYLENE COLLECTION</b>	<b>68 - 108</b>
<b>LVT COLLECTION</b>	<b>110 - 118</b>
<b>TRIOFLOR COLLECTION</b>	<b>120 - 168</b>
<b>COLOR DOT COLLECTION</b>	<b>170 - 194</b>

Huỳnh Hôn Hòa ( Peter Huynh ) - Sales Brand Manager  
hoa.huynh@rongphuongbac.com | 0902 913 465

Đặng Thế Vỹ ( Chris Dang ) - Sales Executive  
thevy.dang@rongphuongbac.com | 0976 985 418



Collection

**NYLON**





Collection

NYLON

Product

BLUESTONE SQ

VND 474.000

PRODUCT SPECIFICATIONS

STYLE NAME  
BLUESTONE SQ

SIZE  
50cm x 50cm

CONSTRUCTION  
Multi-Level Pattern Loop Pile

YARN  
100% BCF Nylon 6,0

DYE METHOD  
100% Solution Dyed

GAUGE  
1/12

PRODUCTION WEIGHT  
22 oz psy

TOTAL THICKNESS  
7.0 mm

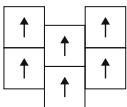
SECONDARY BACKING  
FlexiBac

PACKING  
20 pcs per box

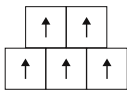
METHOD OF INSTALLATION



1/4 Turn



Ashlar



Brick



BLU180501  
WARM GREY



BLU180502  
GREY VESSEL



BLU180503  
TIMELESS GREY



BLU180504  
BLACK SHADOW

\*as in all quality carpets, colours may vary from dye lot to dye lot.  
\*always check availability of goods before specifying.







Collection

Product

NYLON

BLURRED LINES SQ

VND 525.000

PRODUCT SPECIFICATIONS

STYLE NAME  
BLURRED LINES SQ

SIZE  
50cm x 50cm

CONSTRUCTION  
Integrated Tufted Pattern Loop Pile

YARN  
Invista Nylon 6,0

DYE METHOD  
100% Solution Dyed

GAUGE  
1/12

PRODUCTION WEIGHT  
24 oz psy

TOTAL THICKNESS  
7.0 mm

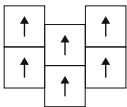
SECONDARY BACKING  
ComfortBac

PACKING  
20 pcs per box

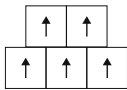
METHOD OF INSTALLATION



1/4 Turn



Ashlar



Brick



50601  
TOASTED CASHEW



50603  
AGED GREY



50604  
BLUE ORIGIN



50606  
BURNT BLACK

\*as in all quality carpets, colours may vary from dye lot to dye lot.  
\*always check availability of goods before specifying.







Collection

NYLON

Product

BREEZY BRIGHT PLANK

VND 521.000

PRODUCT SPECIFICATIONS

STYLE NAME  
BREEZY BRIGHT PLANK

SIZE  
25cm X 100cm

CONSTRUCTION  
Tufted Multi-Level Pattern Loop Pile

YARN  
100% Nylon 6,0

DYE METHOD  
100% Solution Dyed

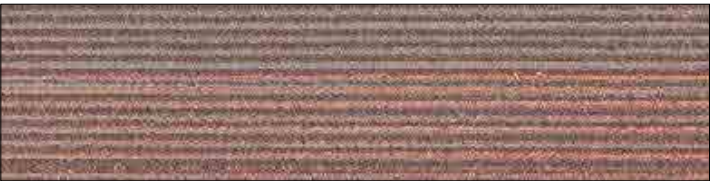
GAUGE  
1/12

PRODUCTION WEIGHT  
22 oz psy

TOTAL THICKNESS  
7 - 7.50 mm

SECONDARY BACKING  
ComfortBac

PACKING  
20 pcs per box



BB164403  
SMOKED SALMON



BB164407  
STATELITE BLUE

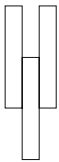


BB164408  
FOXY RED

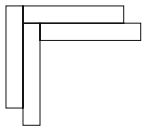


BB164409  
SMOKED GREEN

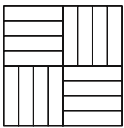
METHOD OF INSTALLATION



Ashlar



Herringbone



Basketweave

\*as in all quality carpets, colours may vary from dye lot to dye lot.  
\*always check availability of goods before specifying.







Collection

NYLON

Product

CITY BLOCKS SQ

VND 521.000

PRODUCT SPECIFICATIONS

STYLE NAME

CITY BLOCKS SQ

SIZE

50cm x 50cm

CONSTRUCTION

Tufted Multi-Level Pattern Loop Pile

YARN

100% Invista Nylon 6,0

DYE METHOD

100% Solution Dyed

GAUGE

1/12

PRODUCTION WEIGHT

24 oz psy

TOTAL THICKNESS

7.0 - 7.5 mm

SECONDARY BACKING

ComfortBac

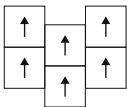
PACKING

20 pcs per box

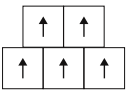
METHOD OF INSTALLATION



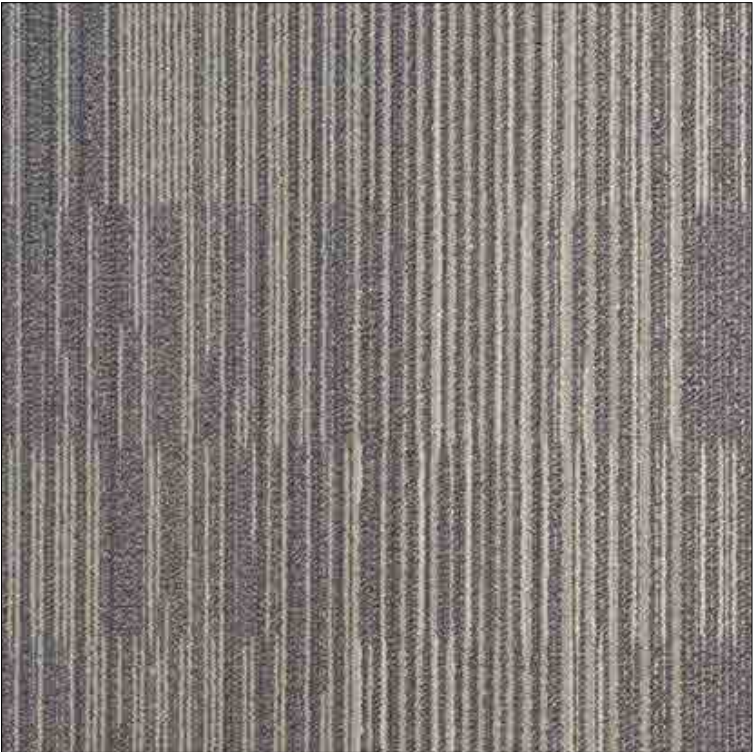
1/4 Turn



Ashlar



Brick



CY17104  
STEEL BAR



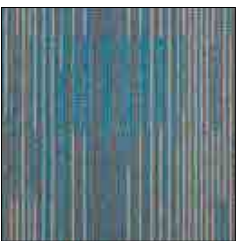
CY17101  
BEIGE FILE



CY17102  
WOODSHELF



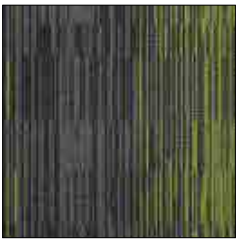
CY17105  
BLACK BOX



CYA17402  
SKY ACCENT



CYA17406  
CHILLY ACCENT



CYA17407  
SALAD ACCENT



CYA17401  
LEMON ACCENT

\*as in all quality carpets, colours may vary from dye lot to dye lot.  
\*always check availability of goods before specifying.







Collection

NYLON

Product

CLOUDTAIL SQ

VND 454.000

PRODUCT SPECIFICATIONS

STYLE NAME  
CLOUDTAIL SQ

SIZE  
50cm x 50cm

CONSTRUCTION  
Tufted Pattern Loop Pile

YARN  
100% BCF 6,0 Nylon

DYE METHOD  
100% Solution Dyed

GAUGE  
1/10

PRODUCTION WEIGHT  
23 oz psy

TOTAL THICKNESS  
7.50 mm

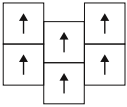
SECONDARY BACKING  
FlexiBac

PACKING  
20 pcs per box

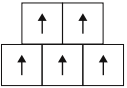
METHOD OF INSTALLATION



1/4 Turn



Ashlar



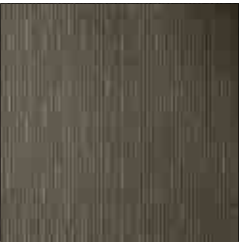
Brick



TG54013  
BLUE PIGMENTS



TG54011  
ARSENIC GREY



TG54018  
CHESTNUT



TG54019  
BLACK LEATHER

\*as in all quality carpets, colours may vary from dye lot to dye lot.  
\*always check availability of goods before specifying.







Collection

NYLON

Product

COLOR BOX II SQ

VND 591.000

PRODUCT SPECIFICATIONS

STYLE NAME  
COLOR BOX II SQ

SIZE  
50cm x 50cm

CONSTRUCTION  
Solid Color Multi-Level Loop Pile

YARN  
100% Invista Nylon

DYE METHOD  
100% Solution Dyed

GAUGE  
1/12

PRODUCTION WEIGHT  
23 oz psy

TOTAL THICKNESS  
7.0 mm

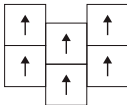
SECONDARY BACKING  
FlexiBac

PACKING  
20 pcs per box

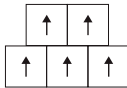
METHOD OF INSTALLATION



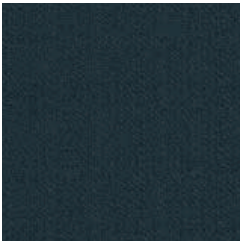
1/4 Turn



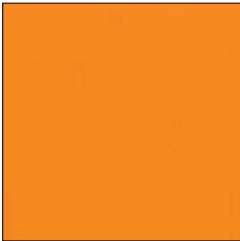
Ashlar



Brick



CX2403  
STRIKING BLACK



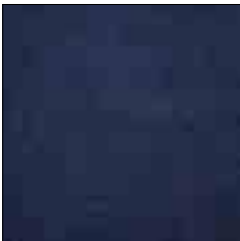
CX2404  
ORANGE PEEL



CX2406  
ELEPHANT GREY



CX2409  
BLIND LIGHT



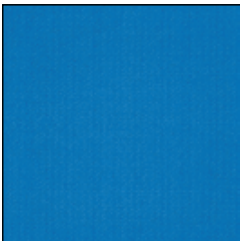
CX2417  
OCEAN DEEP



CX2420  
GREEN FOLIAGE



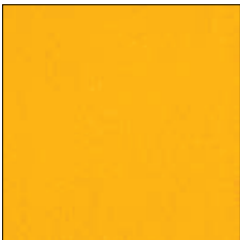
CX2424  
FRESH ORANGE



CX2430  
FRESH BLUE



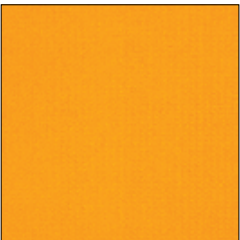
CX2435  
RED DOT



CX2441  
YELLOW RIBBON



CX2444  
SALAD GREEN



CX2480  
YELLOW SUN

\*as in all quality carpets, colours may vary from dye lot to dye lot.  
\*always check availability of goods before specifying.







Collection

NYLON

Product

CONCEPT LOOP SQ

VND 470.000

PRODUCT SPECIFICATIONS

STYLE NAME  
CONCEPT LOOP SQ

SIZE  
50cm x 50cm

CONSTRUCTION  
Tufted Textured Loop Pile

YARN  
Nexlon Premium Nylon 6,0

DYE METHOD  
100% Solution Dyed

GAUGE  
1/12

PRODUCTION WEIGHT  
21 oz psy

TOTAL THICKNESS  
7.2 mm

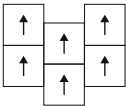
SECONDARY BACKING  
FlexiBac

PACKING  
20 pcs per box

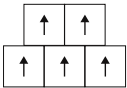
METHOD OF INSTALLATION



1/4 Turn



Ashlar



Brick



CL10910  
LATTE JELLY



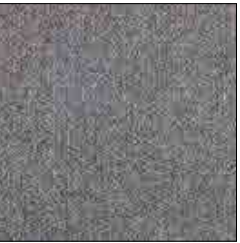
CL10811  
LIKELY BLUE



CL10919  
BLUE SCREEN



CL10929  
CAST IRON



CL10931  
STEEL CAN



CL10934  
BLACK TAG



CL10954  
MATT BLACK

\*as in all quality carpets, colours may vary from dye lot to dye lot.  
\*always check availability of goods before specifying.







Collection

Product

NYLON

CROSSWEAVE PLANK

VND 470.000

PRODUCT SPECIFICATIONS

STYLE NAME  
CROSSWEAVE PLANK

SIZE  
25cm X 100cm

CONSTRUCTION  
Multi-Level Pattern Loop Pile

YARN  
100% Universal Nylon 6,0

DYE METHOD  
100% Solution Dyed

GAUGE  
1/12

PRODUCTION WEIGHT  
20 oz psy

TOTAL THICKNESS  
7.0 mm

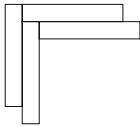
SECONDARY BACKING  
FlexiBac

PACKING  
20 pcs per box

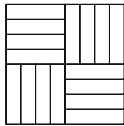
METHOD OF INSTALLATION



Ashlar



Herringbone



Basketweave



CSW12321  
BLUE THREAD



CSW12322  
RED THREAD



CSW12323  
GREEN THREAD



CSW12324  
ORANGE THREAD



CSW12325  
BASE BLACK



CSW12326  
BASE GREY

\*as in all quality carpets, colours may vary from dye lot to dye lot.  
\*always check availability of goods before specifying.







Collection

NYLON

Product

CONCRETE PLANK

VND 470.000

PRODUCT SPECIFICATIONS

STYLE NAME  
CONCRETE PLANK

SIZE  
25cm X 100cm

CONSTRUCTION  
Tufted Multi-Level Pattern Loop Pile

YARN  
100% Universal Nylon 6,0

DYE METHOD  
100% Solution Dyed

GAUGE  
1/10

PRODUCTION WEIGHT  
22 oz psy

TOTAL THICKNESS  
7 - 7.50 mm

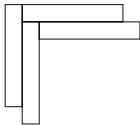
SECONDARY BACKING  
FlexiBac

PACKING  
20 pcs per box

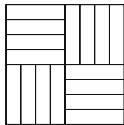
METHOD OF INSTALLATION



Ashlar



Herringbone



Basketweave



CRA171111  
BLACK CHERRY ACCENT



CRA171112  
SANDY GRASS ACCENT



CRA171113  
MUDDY COOL ACCENT



CRT171121  
BLACK



CRT171122  
SANDY

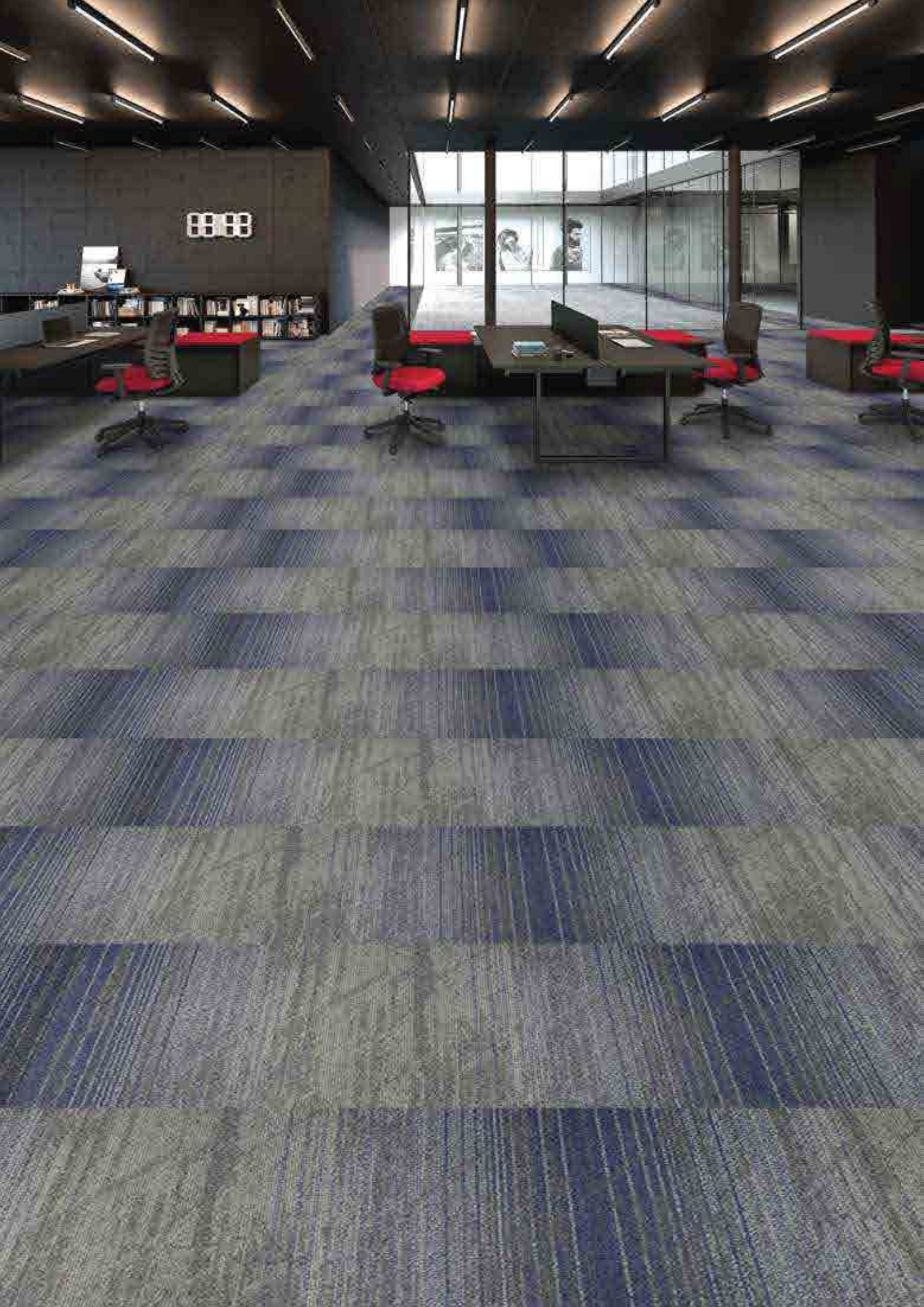


CRT171123  
MUDDY

\*as in all quality carpets, colours may vary from dye lot to dye lot.  
\*always check availability of goods before specifying.







Collection

NYLON

Product

DIAGONAL EFFECT SQ

VND 470.000

PRODUCT SPECIFICATIONS

STYLE NAME  
DIAGONAL EFFECT SQ

SIZE  
50cm x 50cm

CONSTRUCTION  
Tufted Multi - Level Pattern Loop

YARN  
100% Nylon 6,0

DYE METHOD  
100% Solution Dyed

GAUGE  
1/12

PRODUCTION WEIGHT  
22 oz psy

TOTAL THICKNESS  
7.0 mm

SECONDARY BACKING  
FlexiBac

PACKING  
20 pcs per box



DE14481  
DEEP PEPPER RED



DE14482  
DEEP AVOCADO



DE14484  
GREY KALE

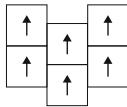


DE14485  
GREY SEA

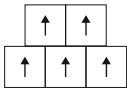
METHOD OF INSTALLATION



1/4 Turn



Ashlar



Brick

\*as in all quality carpets, colours may vary from dye lot to dye lot.  
\*always check availability of goods before specifying.







Collection

NYLON

Product

DIAMANTE SQ

VND 454.000

PRODUCT SPECIFICATIONS

STYLE NAME

DIAMANTE SQ

SIZE

50cm x 50cm

CONSTRUCTION

Tufted Pattern Loop Pile

YARN

100% BCF 6,0 Nylon

DYE METHOD

100% Solution Dyed

GAUGE

1/12

PRODUCTION WEIGHT

23 oz psy

TOTAL THICKNESS

7.5 mm

SECONDARY BACKING

FlexiBac

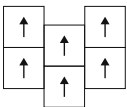
PACKING

20 pcs per box

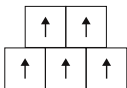
METHOD OF INSTALLATION



1/4 Turn



Ashlar



Brick



TB24236  
ALMOND CREAM



TB24231  
COOL GREY



TB24232  
BLACK BEAN



TB24234  
SPANISH BLUE

\*as in all quality carpets, colours may vary from dye lot to dye lot.  
\*always check availability of goods before specifying.







Collection

## NYLON

Product

## EARTH LIGHT PLANK

VND 438.000

### PRODUCT SPECIFICATIONS

**STYLE NAME**  
EARTH LIGHT PLANK

**SIZE**  
25cm X 100cm

**CONSTRUCTION**  
Multi-Level Pattern Loop Pile

**YARN**  
100% Universal Nylon 6,0

**DYE METHOD**  
100% Solution Dyed

**GAUGE**  
1/12

**PRODUCTION WEIGHT**  
20 oz psy

**TOTAL THICKNESS**  
7.0 mm

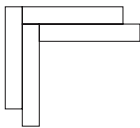
**SECONDARY BACKING**  
FlexiBac

**PACKING**  
20 pcs per box

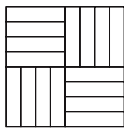
### METHOD OF INSTALLATION



Ashlar



Herringbone



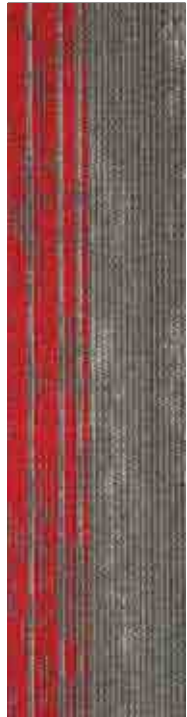
Basketweave



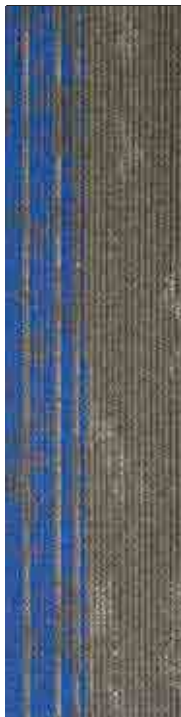
EL190501  
SUNLIGHT



EL190502  
ORANGE RAY



EL190503  
SCARLET RED



EL190505  
HUE BLUE



EL190507  
LIME LIGHT



EL190509  
EARTH BASE

\*as in all quality carpets, colours may vary from dye lot to dye lot.  
\*always check availability of goods before specifying.







Collection

NYLON

Product

DREAMTIME SQ

VND 454.000

PRODUCT SPECIFICATIONS

STYLE NAME  
DREAMTIME SQ

SIZE  
50cm x 50cm

CONSTRUCTION  
Integrated Tufted Pattern Loop Pile

YARN  
Invista Nylon 6,0

DYE METHOD  
100% Yarn Dyed

GAUGE  
1/12

PRODUCTION WEIGHT  
24 oz psy

TOTAL THICKNESS  
7.0 mm

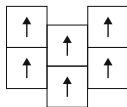
SECONDARY BACKING  
ComfortBac

PACKING  
20 pcs per box

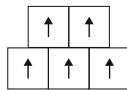
METHOD OF INSTALLATION



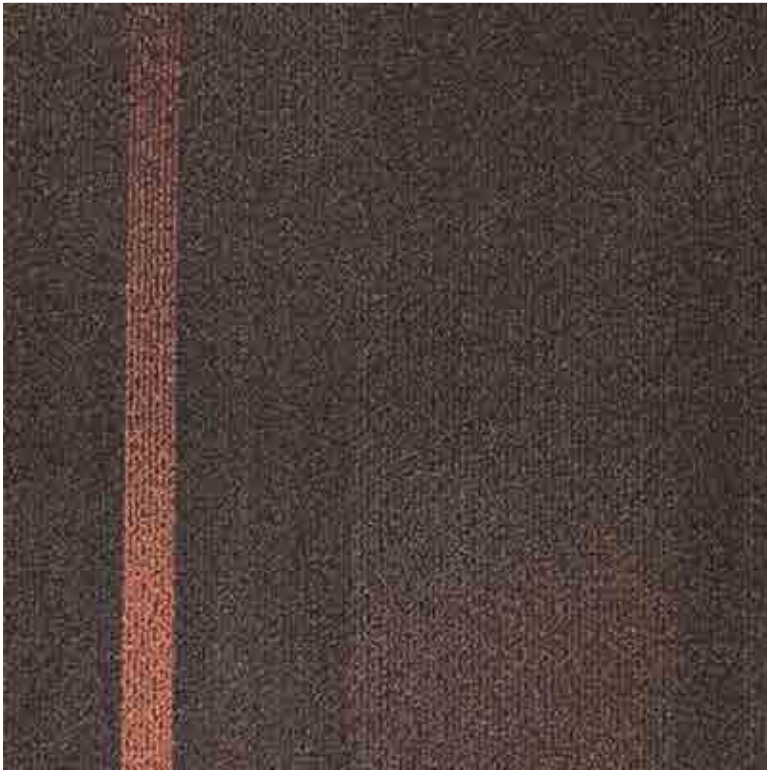
1/4 Turn



Ashlar



Brick



DT0200  
HAVENLY CHOCO



DT0100  
WARM NIGHT



DT0500  
COOL STEEL



DT0600  
CAMEL BAG



DT0700  
BLUE WATER



DT0800  
BLACK MAGIC

\*as in all quality carpets, colours may vary from dye lot to dye lot.  
\*always check availability of goods before specifying.







Collection

NYLON

Product

FLOW PLANK

VND 521.000

PRODUCT SPECIFICATIONS

STYLE NAME  
FLOW PLANK

SIZE  
25cm X 100cm

CONSTRUCTION  
Tufted Multi-Level Pattern Loop Pile

YARN  
100% Invista Nylon 6,0

DYE METHOD  
100% Solution Dyed

GAUGE  
1/10

PRODUCTION WEIGHT  
22 oz psy

TOTAL THICKNESS  
7.0 - 7.5 mm

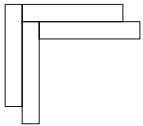
SECONDARY BACKING  
ComfortBac

PACKING  
20 pcs per box

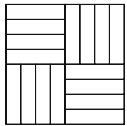
METHOD OF INSTALLATION



Ashlar



Herringbone



Basketweave



FL171401  
STARLIGHT NIGHT



FL171409  
LUNA MOTH



FL171410  
PACIFIC BLUE



FL171415  
NEON GREEN PATH



FL171418  
NEON BLUE PATH



FL171406  
HAZE GRAY.

\*as in all quality carpets, colours may vary from dye lot to dye lot.  
\*always check availability of goods before specifying.







Collection

NYLON

Product

LIMESTONE SQ

VND 505.000

PRODUCT SPECIFICATIONS

STYLE NAME

LIMESTONE SQ

SIZE

50cm x 50cm

CONSTRUCTION

Tufted Multi-Level Pattern Loop Pile

YARN

100% Nylon 6,0

DYE METHOD

100% Solution Dyed

GAUGE

1/12

PRODUCTION WEIGHT

22 oz psy

TOTAL THICKNESS

7.0 - 7.5 mm

SECONDARY BACKING

ComfortBac

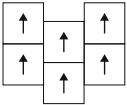
PACKING

20 pcs per box

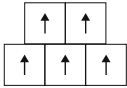
METHOD OF INSTALLATION



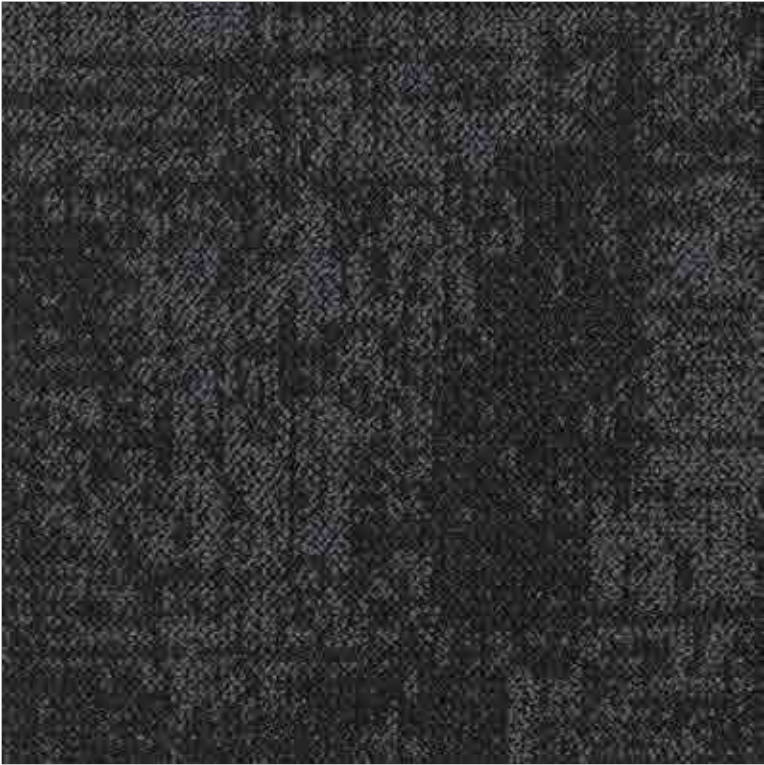
1/4 Turn



Ashlar



Brick



LT192702  
NOVICE BLACK



LT192704  
PIGEON GREY



LT192706  
SILVER TIP



LT192714  
POPCON BEIGE



LT192718  
VANILLA GREY

\*as in all quality carpets, colours may vary from dye lot to dye lot.  
\*always check availability of goods before specifying.







Collection

NYLON

Product

LINEAR SHIFT SQ

VND 454.000

PRODUCT SPECIFICATIONS

STYLE NAME  
LINEAR SHIFT SQ

SIZE  
50cm x 50cm

CONSTRUCTION  
Tufted Pattern Loop Pile

YARN  
Solution Dyed Nylon 6,0

DYE METHOD  
100% Solution Dyed

GAUGE  
1/10

PRODUCTION WEIGHT  
18 oz psy

TOTAL THICKNESS  
7.0 mm

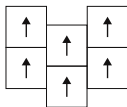
SECONDARY BACKING  
FlexiBac

PACKING  
20 pcs per box

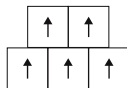
METHOD OF INSTALLATION



1/4 Turn



Ashlar



Brick



LS33084  
GREEN GRADE



LS33083  
AQUA SLIDE



LS33086  
STONE SHADE



LS33089  
RED SHIFT

\*as in all quality carpets, colours may vary from dye lot to dye lot.  
\*always check availability of goods before specifying.







Collection

NYLON

Product

METRICAL SQ

VND 415.000

PRODUCT SPECIFICATIONS

STYLE NAME

METRICAL SQ

SIZE

50cm x 50cm

CONSTRUCTION

Multi-level Pattern Loop Pile

YARN

100% BCF Nylon 6,0

DYE METHOD

100% Solution Dyed

GAUGE

1/12

PRODUCTION WEIGHT

18 oz psy

TOTAL THICKNESS

7.0 mm

SECONDARY BACKING

FlexiBac

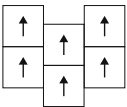
PACKING

20 pcs per box

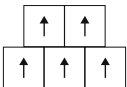
METHOD OF INSTALLATION



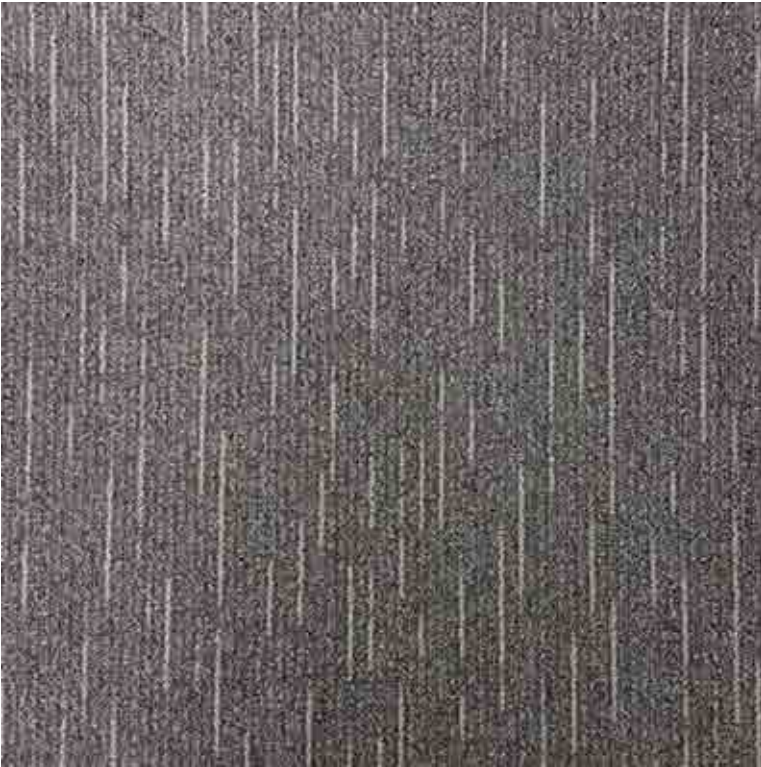
1/4 Turn



Ashlar



Brick



MET0400  
SILVER BANGLE



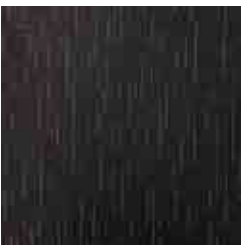
MET0100  
COFFEE KISS



MET0200  
HOT COCO



MET0500  
HEAVY STORM



MET0600  
BLACK TYRE



MET0700  
MIXED DENIM

\*as in all quality carpets, colours may vary from dye lot to dye lot.  
\*always check availability of goods before specifying.







Collection

NYLON

Product

OFFLINE PLANK

VND 450.000

PRODUCT SPECIFICATIONS

STYLE NAME  
OFFLINE PLANK

SIZE  
25cm X 100cm

CONSTRUCTION  
Multi-Level Pattern Loop Pile

YARN  
100% Nylon 6,0

DYE METHOD  
100% Solution Dyed

GAUGE  
1/12

PRODUCTION WEIGHT  
20 oz psy

TOTAL THICKNESS  
7.0 mm

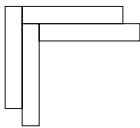
SECONDARY BACKING  
FlexiBac

PACKING  
20 pcs per box

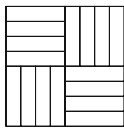
METHOD OF INSTALLATION



Ashlar



Herringbone



Basketweave



OFL67501  
TANNED BODY



OFL67503  
GENTLE GREY



OFL67504  
HARBOR GRAY



OFL67506  
HEATHERED BLUE



OFL67509  
BLACK SHEEP

\*as in all quality carpets, colours may vary from dye lot to dye lot.  
\*always check availability of goods before specifying.







Collection

NYLON

Product

PATHTRACK PLANK

VND 521.000

PRODUCT SPECIFICATIONS

STYLE NAME  
PATHTRACK PLANK

SIZE  
25cm X 100cm

CONSTRUCTION  
Tufted Multi-Level Pattern Loop Pile

YARN  
100% Nylon 6,0

DYE METHOD  
100% Solution Dyed

GAUGE  
1/12

PRODUCTION WEIGHT  
22 oz psy

TOTAL THICKNESS  
7.0 - 7.5 mm

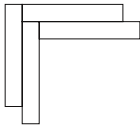
SECONDARY BACKING  
ComfortBac

PACKING  
20 pcs per box

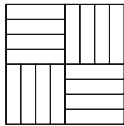
METHOD OF INSTALLATION



Ashlar



Herringbone



Basketweave



PTK180901  
PIT BLACK



PTK180902  
SWISS GREY



PTK180906  
BLADE GREY



PTK180907  
HOT STEEL



PTK180911  
EARTH SKIN



PTK180912  
CAPRI BLUE

\*as in all quality carpets, colours may vary from dye lot to dye lot.  
\*always check availability of goods before specifying.







Collection

NYLON

Product

PLATEAU SQ

VND 481.000

PRODUCT SPECIFICATIONS

STYLE NAME

PLATEAU SQ

SIZE

50cm x 50cm

CONSTRUCTION

Tufted Textured Loop Pile

YARN

100% BCF Nylon 6,0

DYE METHOD

100% Solution Dyed

GAUGE

1/10

PRODUCTION WEIGHT

24 oz psy

TOTAL THICKNESS

7.0 mm

SECONDARY BACKING

FlexiBac

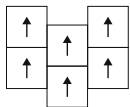
PACKING

20 pcs per box

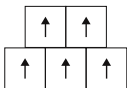
METHOD OF INSTALLATION



1/4 Turn



Ashlar



Brick



1814  
PLATINIUM



1803  
SAPPHIRE



1804  
BLACK PEARL



1811  
DENIM



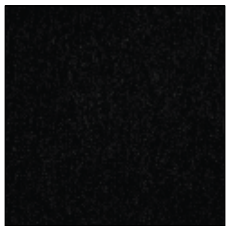
1812  
SEAWEED



1819  
LEATHER BROWN



1820  
TWISTED BEIGE



1821  
JET BLACK

\*as in all quality carpets, colours may vary from dye lot to dye lot.  
\*always check availability of goods before specifying.







Collection

NYLON

Product

RADIANT HEX

VND 583.000

PRODUCT SPECIFICATIONS

STYLE NAME

RADIANT HEX

SIZE

73.2cm X 63.4cm

CONSTRUCTION

Level Loop Pile

YARN

100% Universal Nylon 6,0

DYE METHOD

100% Solution Dyed

GAUGE

1/10

PRODUCTION WEIGHT

18 oz psy

TOTAL THICKNESS

6.5 - 7.0 mm

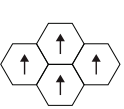
SECONDARY BACKING

FlexiBac

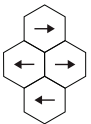
PACKING

20 pcs per box

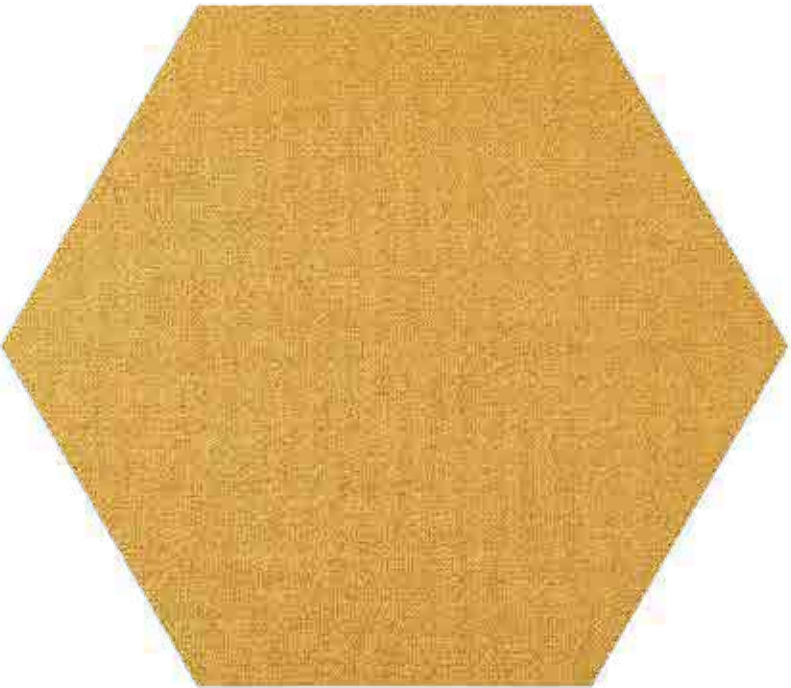
METHOD OF INSTALLATION



Ashlar



Random



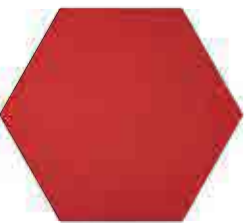
RDX98001  
SUNNY YELLOW



RDX98003  
LUSCIOUS LIME



RDX98004  
BLUE PEN



RDX98005  
SALSA RED



RDX98007  
KIWI CRUSH



RDX98008  
ORANGE FIZZ



RDX98010  
SMOKEY GREY



RDX98011  
BLUE LAKE

\*as in all quality carpets, colours may vary from dye lot to dye lot.  
\*always check availability of goods before specifying.







Collection

Product

NYLON

SHEERCUT II SQ

VND 724.000

PRODUCT SPECIFICATIONS

STYLE NAME  
SHEERCUT II SQ

SIZE  
50cm x 50cm

CONSTRUCTION  
Tufted Cut Pile

YARN  
100% BCF Nylon 6,0

DYE METHOD  
100% Solution Dyed

GAUGE  
1/10

PRODUCTION WEIGHT  
32 oz psy

TOTAL THICKNESS  
8.5 mm

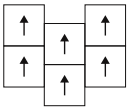
SECONDARY BACKING  
FlexiBac

PACKING  
16 pcs per box

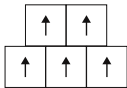
METHOD OF INSTALLATION



1/4 Turn



Ashlar



Brick



2315  
RED



2303  
GREY



2304  
DK GREY



2310  
CAMEL



2312  
DK BLUE



2316  
BLACK



2320  
SUNSHINE



2322  
ORANGE



2324  
MAROON



2334  
GREEN



2335  
PURPLE

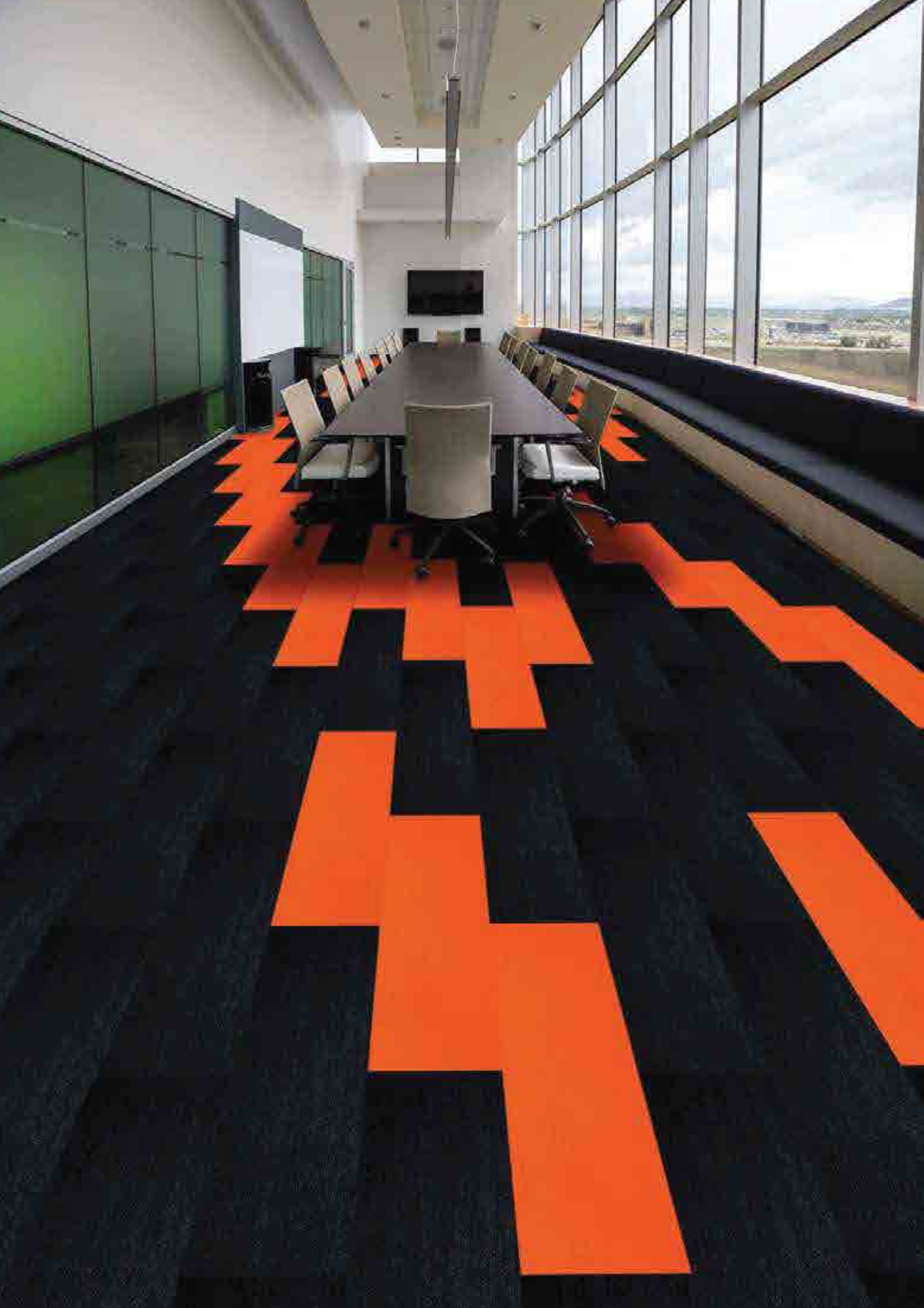


2336  
COBALT

\*as in all quality carpets, colours may vary from dye lot to dye lot.  
\*always check availability of goods before specifying.







Collection

NYLON

Product

SOLID PLANK

VND 470.000

PRODUCT SPECIFICATIONS

STYLE NAME

SOLID PLANK

SIZE

25cm X 100cm

CONSTRUCTION

Multi-Level Pattern Loop Pile

YARN

100% Nylon 6,0

DYE METHOD

100% Solution Dyed

GAUGE

5/64

PRODUCTION WEIGHT

20 oz psy

TOTAL THICKNESS

7.0 mm

SECONDARY BACKING

FlexiBac

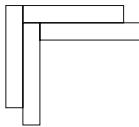
PACKING

20 pcs per box

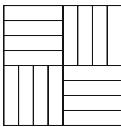
METHOD OF INSTALLATION



Ashlar



Herringbone



Basketweave



SOP47001  
Red Alert



SOP47002  
ORANGE SQUASH



SOP47003  
SUNBEAM



SOP47004  
FRESH GREEN



SOP47005  
SHARP BLUE



SOP47009  
NEW GREY

\*as in all quality carpets, colours may vary from dye lot to dye lot.  
\*always check availability of goods before specifying.







Collection

NYLON

Product

SPARKS PLANK

VND 521.000

PRODUCT SPECIFICATIONS

STYLE NAME  
SPARKS PLANK

SIZE  
25cm X 100cm

CONSTRUCTION  
Tufted Multi-Level Pattern Loop Pile

YARN  
100% Nylon 6,0

DYE METHOD  
100% Solution Dyed

GAUGE  
1/12

PRODUCTION WEIGHT  
22 oz psy

TOTAL THICKNESS  
7 - 7.50 mm

SECONDARY BACKING  
ComfortBac

PACKING  
20 pcs per box



SP161413  
FIREWORKS



SP161403  
NUTMEG



SP161405  
BLUE TINT

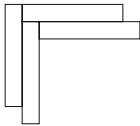


SP161407  
SPACE GREY

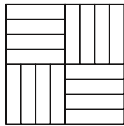
METHOD OF INSTALLATION



Ashlar



Herringbone



Basketweave

\*as in all quality carpets, colours may vary from dye lot to dye lot.  
\*always check availability of goods before specifying.







Collection

NYLON

Product

STAGGERED PLANK

VND 505.000

PRODUCT SPECIFICATIONS

**STYLE NAME**  
STAGGERED PLANK

**SIZE**  
25cm X 100cm

**CONSTRUCTION**  
Tufted Multi-Level Pattern Loop

**YARN**  
100% Nylon 6,0

**DYE METHOD**  
100% Solution Dyed

**GAUGE**  
1/12

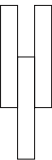
**PRODUCTION WEIGHT**  
22 oz psy

**TOTAL THICKNESS**  
7.0 mm

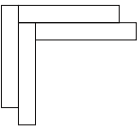
**SECONDARY BACKING**  
ComfortBac

**PACKING**  
20 pcs per box

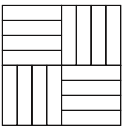
METHOD OF INSTALLATION



Ashlar



Herringbone



Basketweave



SE19201  
SEASON GREY



SE19208  
OYSTER SHELL



SE19212  
CLOUDY BLUE



SE19213  
STORMY GREY



SE19221  
LIGHTNING GREY

\*as in all quality carpets, colours may vary from dye lot to dye lot.  
\*always check availability of goods before specifying.







Collection

NYLON

Product

STONEHENGE SQ

VND 438.000

PRODUCT SPECIFICATIONS

STYLE NAME

STONEHENGE SQ

SIZE

50cm x 50cm

CONSTRUCTION

Multi-Level Pattern Loop Pile

YARN

100% Universal Nylon 6,0

DYE METHOD

100% Solution Dyed

GAUGE

1/12

PRODUCTION WEIGHT

20 oz psy

TOTAL THICKNESS

7.0 mm

SECONDARY BACKING

FlexiBac

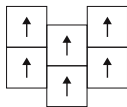
PACKING

20 pcs per box

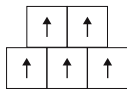
METHOD OF INSTALLATION



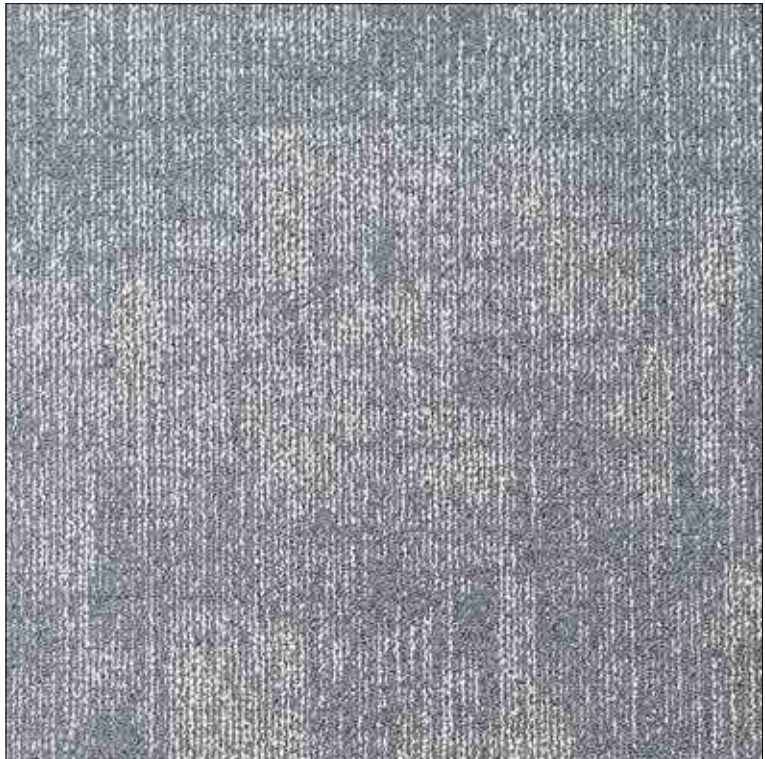
1/4 Turn



Ashlar



Brick



ST14421  
MISTY MIRROR



ST14422  
FROSTED STEEL



ST14423  
CLICK SHADOW



ST14424  
WISHING WELL

\*as in all quality carpets, colours may vary from dye lot to dye lot.  
\*always check availability of goods before specifying.







Collection

NYLON

Product

STRATIFORM SQ

VND 521.000

PRODUCT SPECIFICATIONS

STYLE NAME  
STRATIFORM SQ

SIZE  
50cm x 50cm

CONSTRUCTION  
Tufted Multi-Level Pattern Loop Pile

YARN  
100% Nylon 6,0

DYE METHOD  
100% Solution Dyed

GAUGE  
1/12

PRODUCTION WEIGHT  
24 oz psy

TOTAL THICKNESS  
9.5 mm

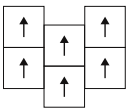
SECONDARY BACKING  
ComfortBac

PACKING  
20 pcs per box

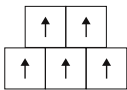
METHOD OF INSTALLATION



1/4 Turn



Ashlar



Brick



STRAF70606  
GREY MIST



STRAF70604  
DARK DENIM



STRAF70612  
ROPE



STRAF70618  
BLACK EAGLE



STRAF70619  
DEEP FOSSIL

\*as in all quality carpets, colours may vary from dye lot to dye lot.  
\*always check availability of goods before specifying.







Collection

**NYLON**

Product

**TERRENE ACCENT PLANK**

**VND 450.000**

### PRODUCT SPECIFICATIONS

**STYLE NAME**  
TERRENE ACCENT PLANK

**SIZE**  
25cm X 100cm

**CONSTRUCTION**  
Multi-Level Pattern Loop Pile

**YARN**  
100% Nylon 6,0

**DYE METHOD**  
100% Solution Dyed

**GAUGE**  
5/64

**PRODUCTION WEIGHT**  
20 oz psy

**TOTAL THICKNESS**  
7.0 mm

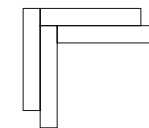
**SECONDARY BACKING**  
FlexiBac

**PACKING**  
20 pcs per box

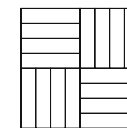
### METHOD OF INSTALLATION



Ashlar



Herringbone



Basketweave



TERA70502  
LINEN ACCENT



TERA70503  
WOOD ACCENT



TERA70505  
SLATE ACCENT



TERA70507  
BLACK ACCENT

\*as in all quality carpets, colours may vary from dye lot to dye lot.  
\*always check availability of goods before specifying.







Collection

NYLON

Product

TERRENE PLANK

VND 450.000

PRODUCT SPECIFICATIONS

**STYLE NAME**  
TERRENE PLANK

**SIZE**  
25cm X 100cm

**CONSTRUCTION**  
Multi-Level Pattern Loop Pile

**YARN**  
100% Nylon 6,0

**DYE METHOD**  
100% Solution Dyed

**GAUGE**  
5/64

**PRODUCTION WEIGHT**  
20 oz psy

**TOTAL THICKNESS**  
7.0 mm

**SECONDARY BACKING**  
FlexiBac

**PACKING**  
20 pcs per box



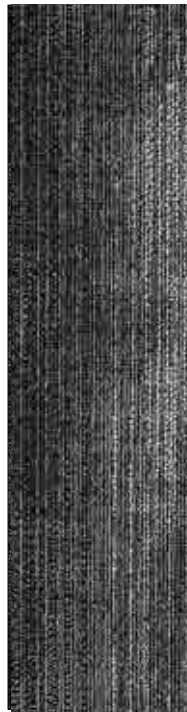
TERR70502  
CRISP LINEN



TERR70503  
WOOD BENCH

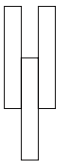


TERR70505  
DARK SLATE

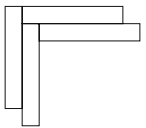


TERR70507  
DEEP BLACK

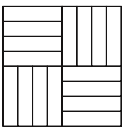
METHOD OF INSTALLATION



Ashlar



Herringbone



Basketweave

\*as in all quality carpets, colours may vary from dye lot to dye lot.  
\*always check availability of goods before specifying.







Collection

NYLON

Product

TIDAL SQ

VND 505.000

PRODUCT SPECIFICATIONS

STYLE NAME

TIDAL SQ

SIZE

50cm x 50cm

CONSTRUCTION

Tufted Textured Loop

YARN

Nexlon Premium Nylon 6,0

DYE METHOD

100% Solution Dyed

GAUGE

1/12

PRODUCTION WEIGHT

21 oz psy

TOTAL THICKNESS

7.0 mm

SECONDARY BACKING

FlexiBac

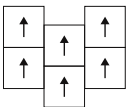
PACKING

20 pcs per box

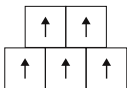
METHOD OF INSTALLATION



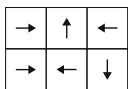
1/4 Turn



Ashlar



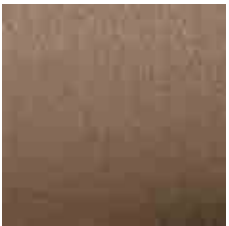
Brick



Random



TD811225  
SUNSHINE YELLOW



TD811231  
BEACH SAND



TD811236  
FOLIAGE GREEN



TD811237  
ORANGE SUNRAY



TD811244  
SPARKLING BLACK



TD811245  
SPACE BLUE

\*as in all quality carpets, colours may vary from dye lot to dye lot.  
\*always check availability of goods before specifying.







Collection

NYLON

Product

WOODBINE SQ

VND 521.000

PRODUCT SPECIFICATIONS

STYLE NAME  
WOODBINE SQ

SIZE  
50cm x 50cm

CONSTRUCTION  
Integrated Tufted Pattern Loop Pile

YARN  
Invista Nylon 6,0 Solution Dyed

DYE METHOD  
100% Solution Dyed

GAUGE  
1/12

PRODUCTION WEIGHT  
24 oz psy

TOTAL THICKNESS  
7.0 mm

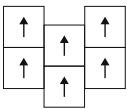
SECONDARY BACKING  
ComfortBac

PACKING  
20 pcs per box

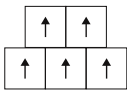
METHOD OF INSTALLATION



1/4 Turn



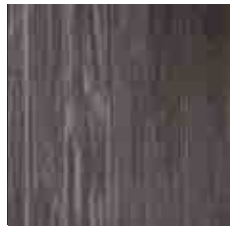
Ashlar



Brick



51302  
SAND SCREED



51303  
STONEHENGE



51304  
RAW CEMENT



51305  
MIDNIGHT VIEW



51306  
BLACK GRAINS

\*as in all quality carpets, colours may vary from dye lot to dye lot.  
\*always check availability of goods before specifying.



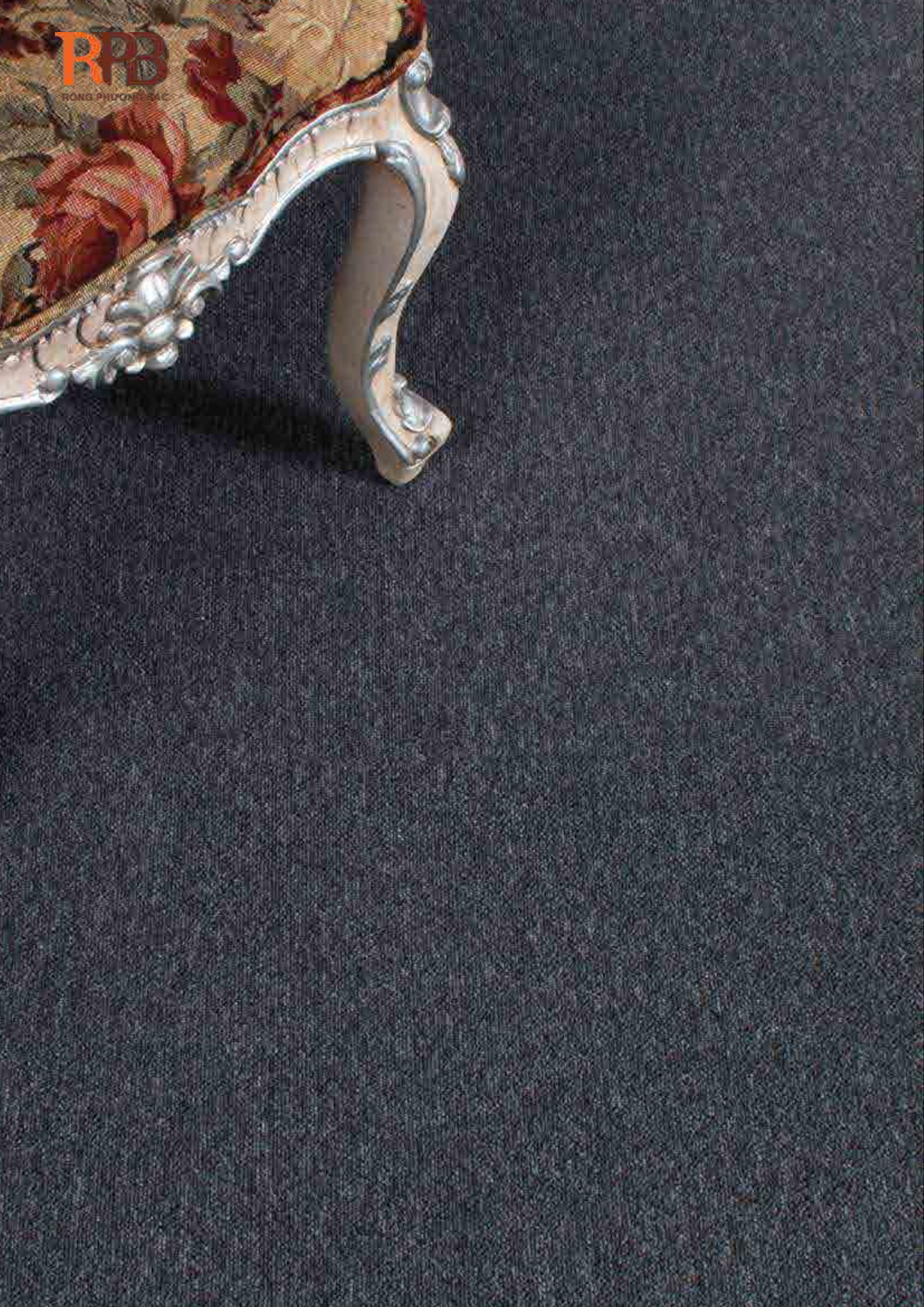




Collection

# POLYPROPYLENE





POLYPROPYLENE

BASICAL SQ

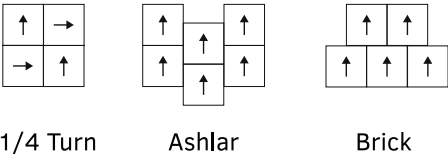
VND 268.000

PRODUCT SPECIFICATIONS

- STYLE NAME**  
BASICAL SQ
- SIZE**  
50cm x 50cm
- CONSTRUCTION**  
Tufted Textured Loop Pile
- YARN**  
100% B.C.F. Synthetic Fiber
- DYE METHOD**  
100% Solution Dyed
- GAUGE**  
1/10
- PRODUCTION WEIGHT**  
17 oz psy
- TOTAL THICKNESS**  
6.5 mm
- SECONDARY BACKING**  
FlexiBac
- PACKING**  
24 pcs per box

 PA001 BLUE SPAR	 PA006 BASALT	 PA015 BLUSH
 PA016 OCEAN BLUE	 PA018 BRICK	 PA019 CARBON
 PA029 ASH BLACK	 PA082 RED SPARKS	 PA085 BLUE CORAL

METHOD OF INSTALLATION



\*as in all quality carpets, colours may vary from dye lot to dye lot.  
\*always check availability of goods before specifying.





Collection

# POLYPROPYLENE

Product

# CLOUDFLARE SQ

VND 391.000

## PRODUCT SPECIFICATIONS

**STYLE NAME**  
CLOUDFLARE SQ

**SIZE**  
50cm x 50cm

**CONSTRUCTION**  
Integrated Tufted Pattern Loop Pile

**YARN**  
BCF Synthetic Fiber

**DYE METHOD**  
100% Solution Dyed

**GAUGE**  
1/12

**PRODUCTION WEIGHT**  
22 oz psy

**TOTAL THICKNESS**  
7.0 mm

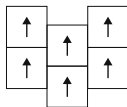
**SECONDARY BACKING**  
FlexiBac

**PACKING**  
20 pcs per box

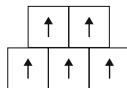
## METHOD OF INSTALLATION



1/4 Turn



Ashlar



Brick



CF60692  
GREY PEBBLE



CF60691  
PEPPERCORN



CF60695  
STONEY BEACH



CF60696  
SMOKED WOOD

\*as in all quality carpets, colours may vary from dye lot to dye lot.  
\*always check availability of goods before specifying.







Collection

POLYPROPYLENE

Product

CROSSTIE SQ

VND 341.000

PRODUCT SPECIFICATIONS

STYLE NAME

CROSSTIE SQ

SIZE

50cm x 50cm

CONSTRUCTION

Multi-Level Pattern Loop Pile

YARN

BCF Synthetic Fiber

DYE METHOD

100% Solution Dyed

GAUGE

5/64

PRODUCTION WEIGHT

21 oz psy

TOTAL THICKNESS

7.0 mm

SECONDARY BACKING

FlexiBac

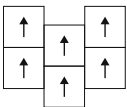
PACKING

20 pcs per box

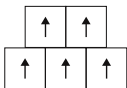
METHOD OF INSTALLATION



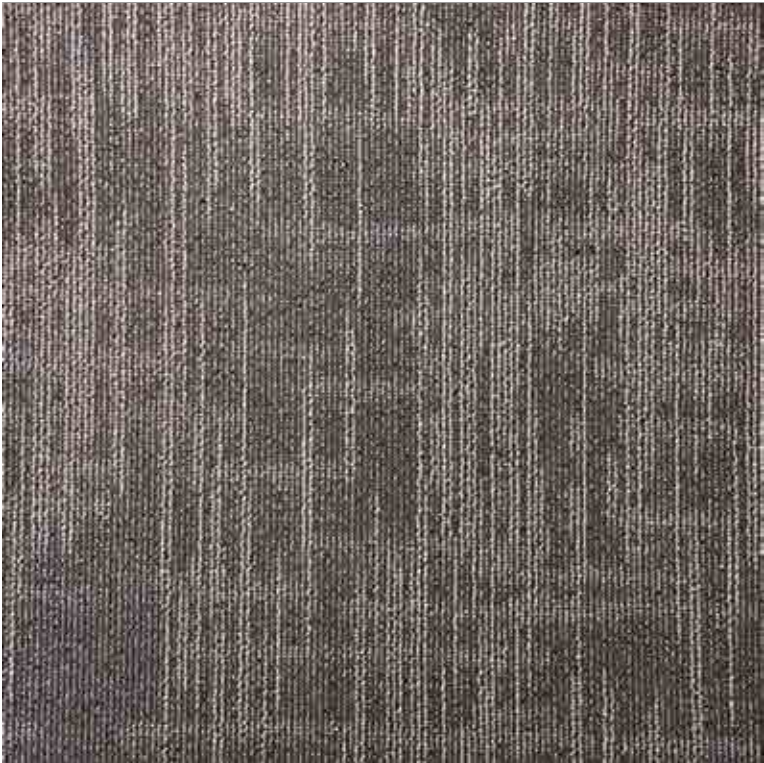
1/4 Turn



Ashlar



Brick



CRO0500  
CYCLONE



CRO0100  
MILK TEA



CRO0200  
LANDSLIDE



CRO0300  
COCO CREAM



CRO0600  
BLACK CROW



CRO0700  
SURFERS BLUE

\*as in all quality carpets, colours may vary from dye lot to dye lot.  
\*always check availability of goods before specifying.







Collection

POLYPROPYLENE

Product

ELEMENTAL SQ

VND 352.000

PRODUCT SPECIFICATIONS

STYLE NAME  
ELEMENTAL SQ

SIZE  
50cm x 50cm

CONSTRUCTION  
Tufted Pattern Loop Pile

YARN  
100% Synthetic Fiber

DYE METHOD  
100% Solution Dyed

GAUGE  
5/64

PRODUCTION WEIGHT  
21 oz psy

TOTAL THICKNESS  
9.0 mm

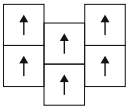
SECONDARY BACKING  
ComfortBac

PACKING  
20 pcs per box

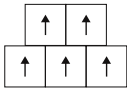
METHOD OF INSTALLATION



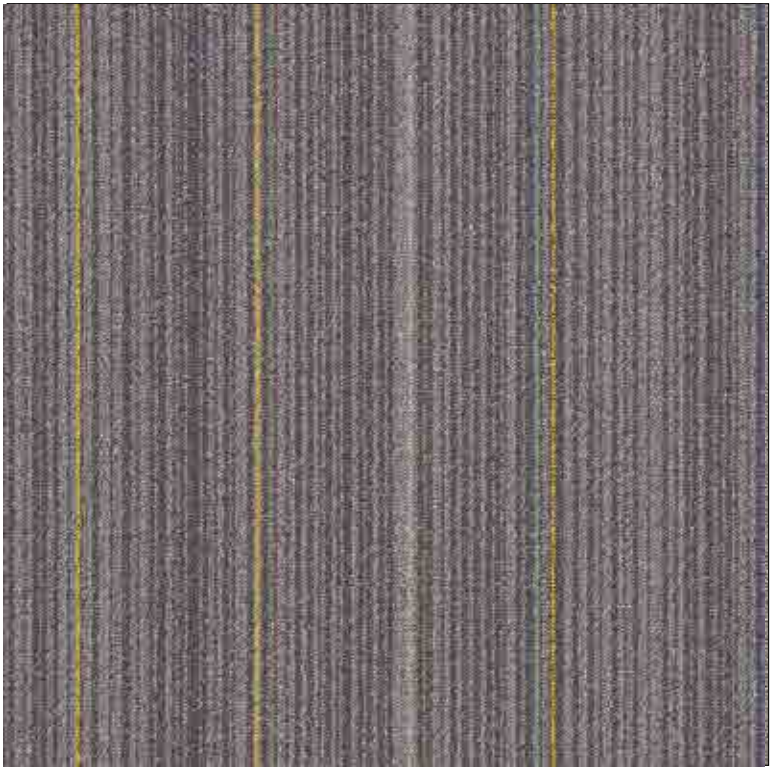
1/4 Turn



Ashlar



Brick



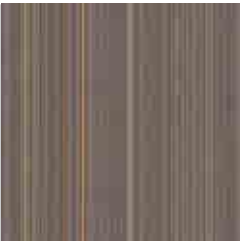
EL0200  
FOGGY BAY



EL0300  
GREY FIR



EL0400  
CHARRED STEEL



EL0500  
SILKY GREY



EL0600  
EARTHEN POT



EL0700  
BLUE COLLAR

\*as in all quality carpets, colours may vary from dye lot to dye lot.  
\*always check availability of goods before specifying.







Collection

Product

POLYPROPYLENE

ENCORE BRIGHT SQ

VND 352.000

PRODUCT SPECIFICATIONS

STYLE NAME  
ENCORE BRIGHT SQ

SIZE  
50cm x 50cm

CONSTRUCTION  
Integrated Tufted Pattern Loop Pile

YARN  
BCF Synthetic Fiber

DYE METHOD  
100% Solution Dyed

GAUGE  
5/64

PRODUCTION WEIGHT  
21 oz psy

TOTAL THICKNESS  
7.0 mm

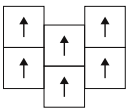
SECONDARY BACKING  
FlexiBac

PACKING  
20 pcs per box

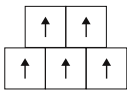
METHOD OF INSTALLATION



1/4 Turn



Ashlar



Brick



EB0200  
SLIMY SAND



EB0400  
DOUBLE CHOCOLATE



EB0800  
GREY MOON



EB1000  
DARK WELL



EB1200  
DEEP WATER

\*as in all quality carpets, colours may vary from dye lot to dye lot.  
\*always check availability of goods before specifying.







Collection

POLYPROPYLENE

Product

ENCORE SQ

VND 352.000

PRODUCT SPECIFICATIONS

STYLE NAME  
ENCORE SQ

SIZE  
50cm x 50cm

CONSTRUCTION  
Integrated Tufted Pattern Loop Pile

YARN  
BCF Synthetic Fiber

DYE METHOD  
100% Solution Dyed

GAUGE  
5/64

PRODUCTION WEIGHT  
21 oz psy

TOTAL THICKNESS  
7.0 mm

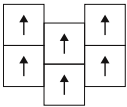
SECONDARY BACKING  
FlexiBac

PACKING  
20 pcs per box

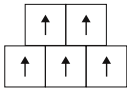
METHOD OF INSTALLATION



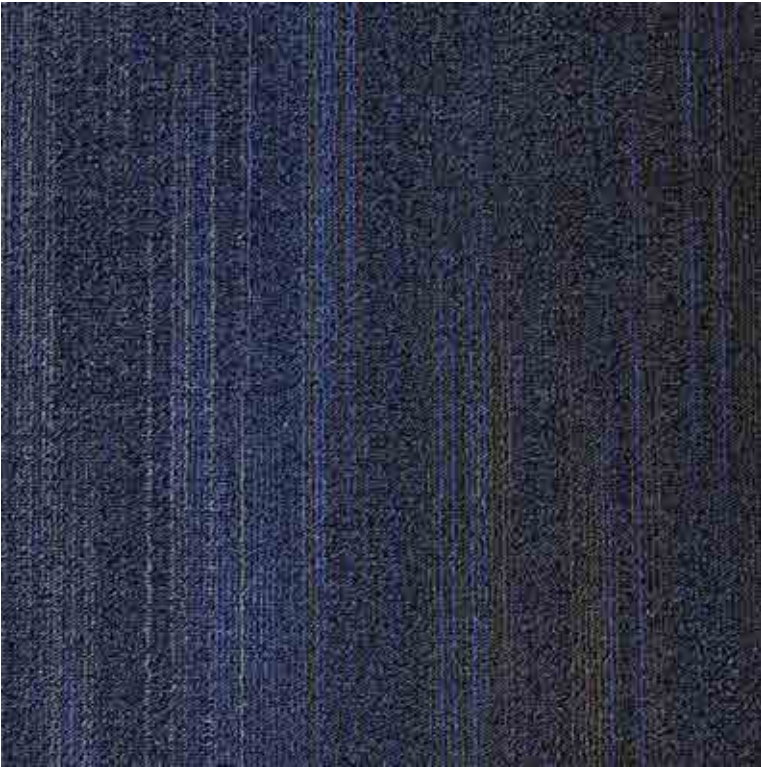
1/4 Turn



Ashlar



Brick



EC1200  
DEEP WATER



EC0200  
SLIMY SAND



EC0400  
DOUBLE CHOCOLATE



EC0800  
GREY MOON



EC1000  
DARK WELL

\*as in all quality carpets, colours may vary from dye lot to dye lot.  
\*always check availability of goods before specifying.







Collection

POLYPROPYLENE

Product

FLASHLINE SQ

VND 352.000

PRODUCT SPECIFICATIONS

STYLE NAME  
FLASHLINE SQ

SIZE  
50cm x 50cm

CONSTRUCTION  
Multi-Level Pattern Loop Pile

YARN  
BCF Synthetic Fiber

DYE METHOD  
100% Solution Dyed

GAUGE  
5/64

PRODUCTION WEIGHT  
21 oz psy

TOTAL THICKNESS  
7.0 mm

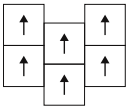
SECONDARY BACKING  
FlexiBac

PACKING  
20 pcs per box

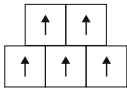
METHOD OF INSTALLATION



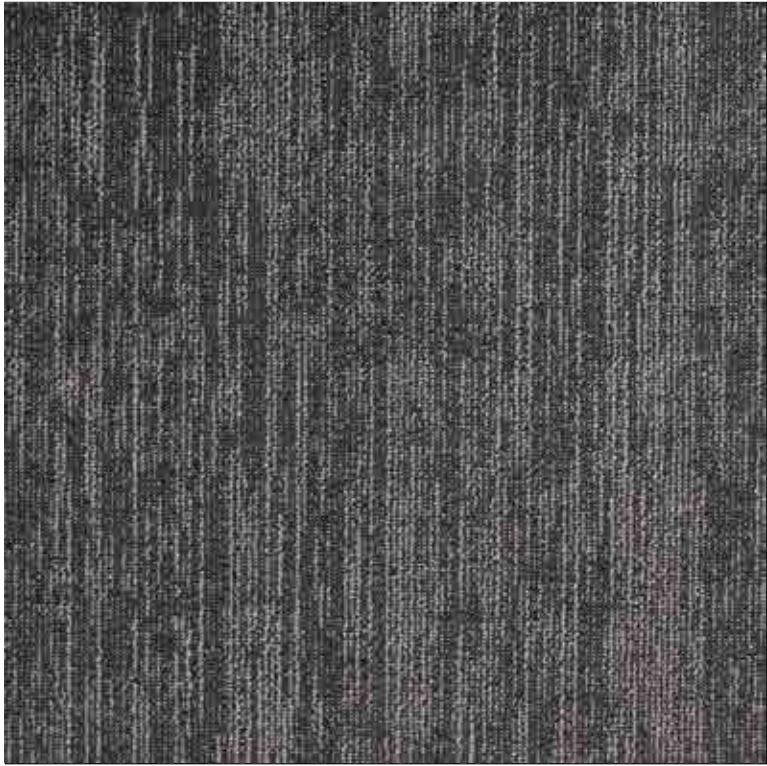
1/4 Turn



Ashlar



Brick



FLASH70605  
DEEP COAL



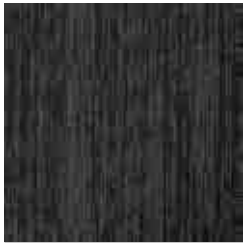
FLASH70601  
SANDY FIELD



FLASH70602  
SMOKED OYSTER



FLASH70603  
HAZELNUT



FLASH70606  
CLASSIC BLACK



FLASH70607  
BLUE LAKE

\*as in all quality carpets, colours may vary from dye lot to dye lot.  
\*always check availability of goods before specifying.







Collection

POLYPROPYLENE

Product

FLASHLINE ACCENT SQ

VND 352.000

PRODUCT SPECIFICATIONS

**STYLE NAME**  
FLASHLINE ACCENT SQ

**SIZE**  
50cm x 50cm

**CONSTRUCTION**  
Multi-Level Pattern Loop Pile

**YARN**  
BCF Synthetic Fiber

**DYE METHOD**  
100% Solution Dyed

**GAUGE**  
5/64

**PRODUCTION WEIGHT**  
21 oz psy

**TOTAL THICKNESS**  
7.0 mm

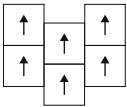
**SECONDARY BACKING**  
FlexiBac

**PACKING**  
20 pcs per box

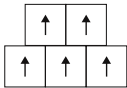
METHOD OF INSTALLATION



1/4 Turn



Ashlar



Brick



FLASA70602  
OYSTER ACCENT



FLASA70601  
SANDY ACCENT



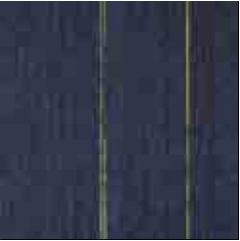
FLASA70603  
HAZELNUT ACCENT



FLASA70605  
COAL ACCENT



FLASA70606  
CLASSIC ACCENT



FLASA70607  
LAKE ACCENT

\*as in all quality carpets, colours may vary from dye lot to dye lot.  
\*always check availability of goods before specifying.







Collection

POLYPROPYLENE

Product

GREY FIELD SQ

VND 352.000

PRODUCT SPECIFICATIONS

STYLE NAME  
GREY FIELD SQ

SIZE  
50cm x 50cm

CONSTRUCTION  
Multi-Level Tufted Pattern Loop

YARN  
BCF Synthetic Fiber

DYE METHOD  
100% Solution Dyed

GAUGE  
1/12

PRODUCTION WEIGHT  
22 oz psy

TOTAL THICKNESS  
7.0 mm

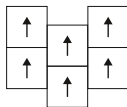
SECONDARY BACKING  
FlexiBac

PACKING  
20 pcs per box

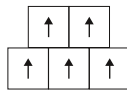
METHOD OF INSTALLATION



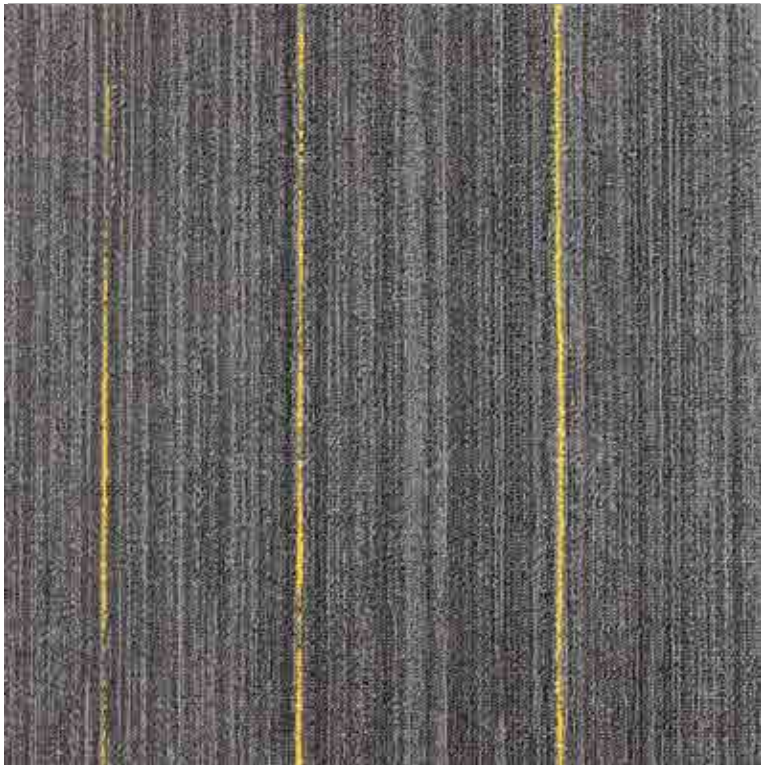
1/4 Turn



Ashlar



Brick



GF12401  
Yellow Tint



GF12402  
Orange Tint



GF12403  
Red Tint



GF12404  
Green Tint



GF12405  
Teal Tint



GF12406  
Base Grey

\*as in all quality carpets, colours may vary from dye lot to dye lot.  
\*always check availability of goods before specifying.







Collection

POLYPROPYLENE

Product

LAND SQ

VND 294.000

PRODUCT SPECIFICATIONS

STYLE NAME  
LAND SQ

SIZE  
50cm x 50cm

CONSTRUCTION  
Tufted Pattern Loop

YARN  
BCF Synthetic Fiber

DYE METHOD  
100% Solution Dyed

GAUGE  
1/10

PRODUCTION WEIGHT  
19 oz psy

TOTAL THICKNESS  
6.5 mm

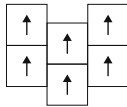
SECONDARY BACKING  
FlexiBac

PACKING  
20 pcs per box

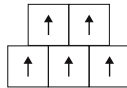
METHOD OF INSTALLATION



1/4 Turn



Ashlar



Brick



FP8006A1  
Charcoal



FP8006B1  
MYTH GREY



FP8006C1  
COFFEE BEAN



FP8006D1  
HONEY



FP8006G1  
RED CHERRY



FP8006J1  
BEIGE SAND

\*as in all quality carpets, colours may vary from dye lot to dye lot.  
\*always check availability of goods before specifying.







Collection

POLYPROPYLENE

Product

LINKS SQ

VND 352.000

PRODUCT SPECIFICATIONS

**STYLE NAME**  
LINKS SQ

**SIZE**  
50cm x 50cm

**CONSTRUCTION**  
Multi-Level Tufted Pattern Loop

**YARN**  
BCF Synthetic Fiber

**DYE METHOD**  
100% Solution Dyed

**GAUGE**  
1/12

**PRODUCTION WEIGHT**  
21 oz psy

**TOTAL THICKNESS**  
7.0 mm

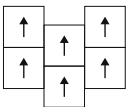
**SECONDARY BACKING**  
FlexiBac

**PACKING**  
20 pcs per box

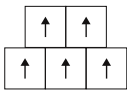
METHOD OF INSTALLATION



1/4 Turn



Ashlar



Brick



LK70801  
BEIGE HUE



LK70802  
BURNT TONE



LK70803  
FADED GREY



LK70804  
BLACK DIRT



LK70805  
MOSS BLACK



LK70806  
BLUE MARKER

\*as in all quality carpets, colours may vary from dye lot to dye lot.  
\*always check availability of goods before specifying.







Collection

POLYPROPYLENE

Product

NATURAL PLANK

VND 360.000

PRODUCT SPECIFICATIONS

STYLE NAME  
NATURAL PLANK

SIZE  
25cm X 100cm

CONSTRUCTION  
Multi-Level Tufted Pattern Loop

YARN  
BCF Synthetic Fiber

DYE METHOD  
100% Solution Dyed

GAUGE  
1/12

PRODUCTION WEIGHT  
22 oz psy

TOTAL THICKNESS  
7.0 mm

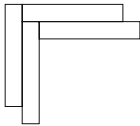
SECONDARY BACKING  
ComfortBac

PACKING  
20 pcs per box

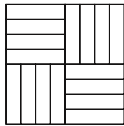
METHOD OF INSTALLATION



Ashlar



Herringbone



Basketweave



NLP174701  
BLACK SHOES



NLP174707  
GREY HAIR



NLP174708  
BLUE SHIRT



NLP174712  
KHAKI PANTS

\*as in all quality carpets, colours may vary from dye lot to dye lot.  
\*always check availability of goods before specifying.







Collection

Product

POLYPROPYLENE

PRECAST PLANK

VND 360.000

PRODUCT SPECIFICATIONS

STYLE NAME  
PRECAST PLANK

SIZE  
25cm X 100cm

CONSTRUCTION  
Multi-Level Tufted Pattern Loop

YARN  
BCF Synthetic Fiber

DYE METHOD  
100% Solution Dyed

GAUGE  
1/12

PRODUCTION WEIGHT  
22 oz psy

TOTAL THICKNESS  
7.0 mm

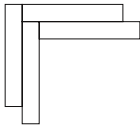
SECONDARY BACKING  
ComfortBac

PACKING  
20 pcs per box

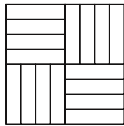
METHOD OF INSTALLATION



Ashlar



Herringbone



Basketweave



PRC18061  
GREY LIME



PRC18064  
COFFEE ORANGE



PRC18065  
COCO RED



PRC18067  
BACK TEAL



PRC18069  
BLUE PEA

\*as in all quality carpets, colours may vary from dye lot to dye lot.  
\*always check availability of goods before specifying.







Collection

POLYPROPYLENE

Product

RATTAN SQ

VND 360.000

PRODUCT SPECIFICATIONS

STYLE NAME  
RATTAN SQ

SIZE  
50cm x 50cm

CONSTRUCTION  
Integrated Tufted Pattern Loop Pile

YARN  
BCF Synthetic Fiber

DYE METHOD  
100% Solution Dyed

GAUGE  
1/12

PRODUCTION WEIGHT  
23 oz psy

TOTAL THICKNESS  
7.0 mm

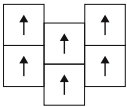
SECONDARY BACKING  
ComfortBac

PACKING  
20 pcs per box

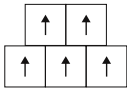
METHOD OF INSTALLATION



1/4 Turn



Ashlar



Brick



RT0700  
BLUE RAY



RT0200  
EARTHEN CUP



RT0300  
SILVER METAL



RT0400  
MOTH STONE



RT0800  
DARK IMAGE

\*as in all quality carpets, colours may vary from dye lot to dye lot.  
\*always check availability of goods before specifying.







Collection

Product

POLYPROPYLENE

SOLIDWORKS SQ

VND 348.000

PRODUCT SPECIFICATIONS

STYLE NAME  
SOLIDWORKS SQ

SIZE  
50cm x 50cm

CONSTRUCTION  
Multi-Level Pattern Loop Pile

YARN  
BCF Synthetic Fiber

DYE METHOD  
100% Solution Dyed

GAUGE  
5/64

PRODUCTION WEIGHT  
21 oz psy

TOTAL THICKNESS  
7.0 mm

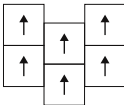
SECONDARY BACKING  
FlexiBac

PACKING  
20 pcs per box

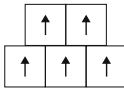
METHOD OF INSTALLATION



1/4 Turn



Ashlar



Brick



SOW0200  
ORANGE TREE



SOW0100  
RED LIGHT



SOW0300  
YELLOW TAIL



SOW0400  
GREEN FIELD



SOW0500  
BLUE INK

\*as in all quality carpets, colours may vary from dye lot to dye lot.  
\*always check availability of goods before specifying.







Collection

POLYPROPYLENE

Product

SPACE SQ

VND 348.000

PRODUCT SPECIFICATIONS

STYLE NAME  
SPACE SQ

SIZE  
50cm x 50cm

CONSTRUCTION  
Integrated Tufted Pattern Loop Pile

YARN  
BCF Synthetic Fiber

DYE METHOD  
100% Solution Dyed

GAUGE  
5/64

PRODUCTION WEIGHT  
21 oz psy

TOTAL THICKNESS  
7.0 mm

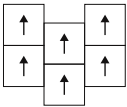
SECONDARY BACKING  
FlexiBac

PACKING  
20 pcs per box

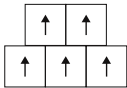
METHOD OF INSTALLATION



1/4 Turn



Ashlar



Brick



SP0100  
COCO FONDEU



SP0200  
HONEY STICK



SP0300  
HARD NAIL



SP0400  
GREY MOUSSE

\*as in all quality carpets, colours may vary from dye lot to dye lot.  
\*always check availability of goods before specifying.







Collection

Product

POLYPROPYLENE

STRUCTURED MESH SQ

VND 360.000

PRODUCT SPECIFICATIONS

STYLE NAME  
STRUCTURED MESH SQ

SIZE  
50cm x 50cm

CONSTRUCTION  
Integrated Tufted Pattern Loop Pile

YARN  
BCF Synthetic Fiber

DYE METHOD  
100% Solution Dyed

GAUGE  
1/12

PRODUCTION WEIGHT  
23 oz psy

TOTAL THICKNESS  
7.0 mm

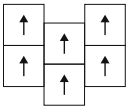
SECONDARY BACKING  
ComfortBac

PACKING  
20 pcs per box

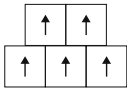
METHOD OF INSTALLATION



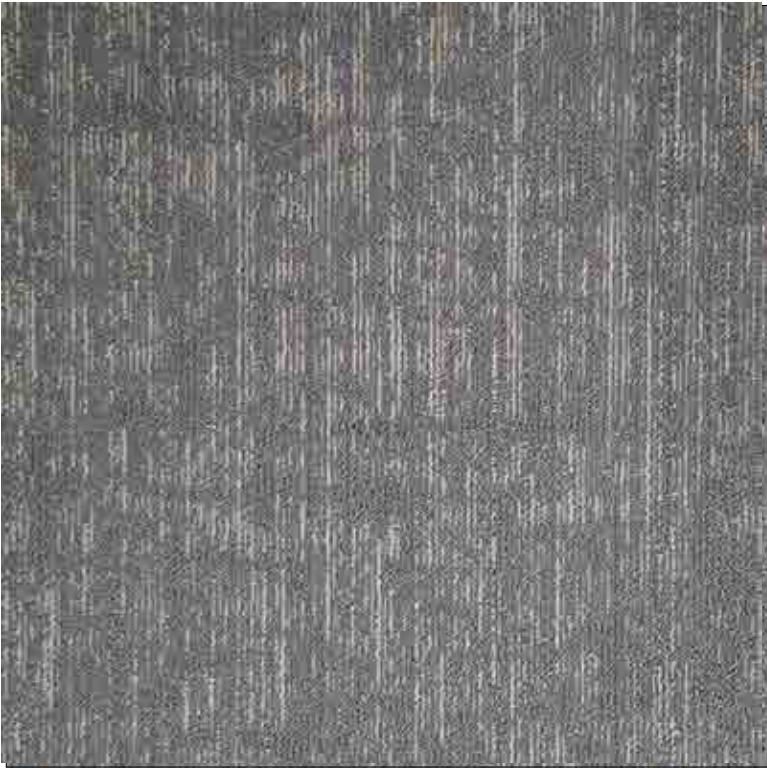
1/4 Turn



Ashlar



Brick



ST160523  
GREY WIRE



ST16051  
HONEY POT



ST16052  
WALNUT SHELL



ST16056  
CIRCUIT BLACK

\*as in all quality carpets, colours may vary from dye lot to dye lot.  
\*always check availability of goods before specifying.







Collection

POLYPROPYLENE

Product

TRACKLINE SQ

VND 360.000

PRODUCT SPECIFICATIONS

STYLE NAME  
TRACKLINE SQ

SIZE  
50cm x 50cm

CONSTRUCTION  
Integrated Tufted Pattern Loop Pile

YARN  
BCF Synthetic Fiber

DYE METHOD  
100% Solution Dyed

GAUGE  
1/12

PRODUCTION WEIGHT  
23 oz psy

TOTAL THICKNESS  
7.0 mm

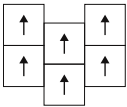
SECONDARY BACKING  
FlexiBac

PACKING  
20 pcs per box

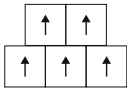
METHOD OF INSTALLATION



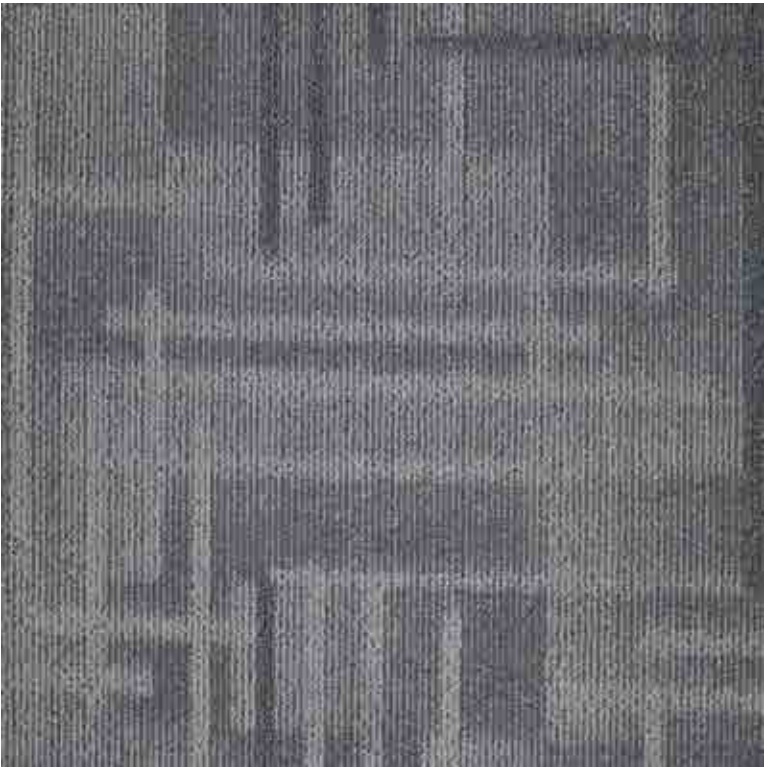
1/4 Turn



Ashlar



Brick



13084  
MEEK GREY



13081  
HAZEL



13083  
CHOCO TOPPING



13085  
BURNT POT



13086  
FUSE BLUE



13088  
BUFFALO BLACK

\*as in all quality carpets, colours may vary from dye lot to dye lot.  
\*always check availability of goods before specifying.







Collection

Product

POLYPROPYLENE

VERTICAL ACCENT SQ

VND 348.000

PRODUCT SPECIFICATIONS

STYLE NAME  
VERTICAL ACCENT SQ

SIZE  
50cm x 50cm

CONSTRUCTION  
Integrated Tufted Pattern Loop Pile

YARN  
BCF Synthetic Fiber

DYE METHOD  
100% Solution Dyed

GAUGE  
5/64

PRODUCTION WEIGHT  
21 oz psy

TOTAL THICKNESS  
7.0 mm

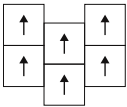
SECONDARY BACKING  
FlexiBac

PACKING  
20 pcs per box

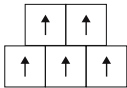
METHOD OF INSTALLATION



1/4 Turn



Ashlar



Brick



VA0200  
BLUE LIGHT



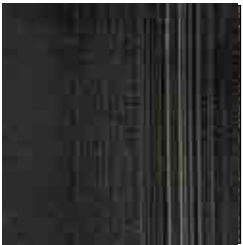
VA0100  
GREEN LEAF



VA0300  
SUNNY HILL



VA0400  
COFFEE BEAN



VA0600  
BLACK SEASON



VA0700  
GREY STRIPE

\*as in all quality carpets, colours may vary from dye lot to dye lot.  
\*always check availability of goods before specifying.







Collection

Product

POLYPROPYLENE

WOOD CANVAS SQ

VND 360.000

PRODUCT SPECIFICATIONS

STYLE NAME  
WOOD CANVAS SQ

SIZE  
50cm x 50cm

CONSTRUCTION  
Integrated Tufted Pattern Loop Pile

YARN  
BCF Synthetic Fiber

DYE METHOD  
100% Solution Dyed

GAUGE  
1/12

PRODUCTION WEIGHT  
23 oz psy

TOTAL THICKNESS  
7.0 mm

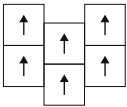
SECONDARY BACKING  
ComfortBac

PACKING  
20 pcs per box

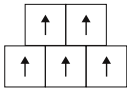
METHOD OF INSTALLATION



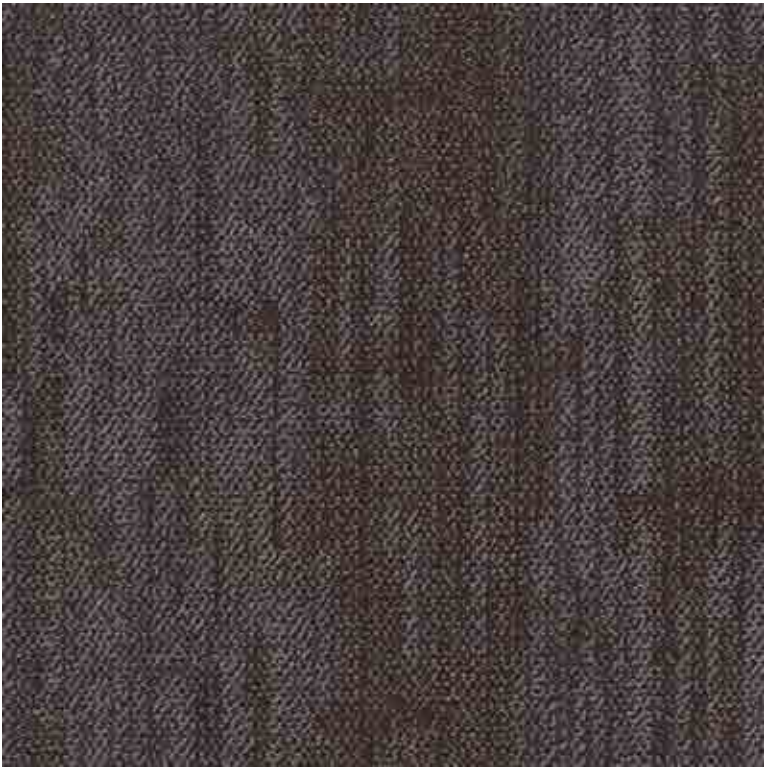
1/4 Turn



Ashlar



Brick



W016057  
BLACKBOARD



W016051  
LONG BENCH



W016053  
WARM COFFEE



W016055  
GREY CHISEL



W016056  
CIGAR



W016058  
DUSKY BLUE

\*as in all quality carpets, colours may vary from dye lot to dye lot.  
\*always check availability of goods before specifying.







Collection

---

**LVT**



LVT SERIES 1

VND 391.000

PRODUCT SPECIFICATIONS

STYLE NAME

LVT Series 1

SIZE

6” x 48”

OVERALL GAUGE

3.0 mm

WEAR LAYER

0.5 mm

FINISH

PUR™

INSTALLATION

Glue Down

PACKING

14 pcs = 28sf per box, 2.60kg per box

PRODUCT PERFORMANCE

WEAR CLASSIFICATION

Commercial Grade Resilient Tile

SUSTAINABILITY

FloorScore® Certified

Commercial - Limited 10 year

Residential - Limited 15 year

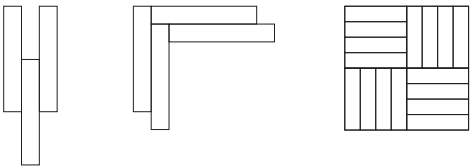
TREATMENT

Anti-Bacterial within PUR™

PACKING

14 pcs per box

METHOD OF INSTALLATION



Ashlar

Herringbone

Basketweave



GIDGEE-9



INDIA LAUREL-5



MACACAUBA-16



REDWOOD-7



SUGAR MAPLE-10



WENGE-17



LVT SERIES 2

VND 391.000

PRODUCT SPECIFICATIONS

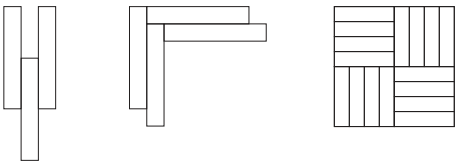
- STYLE NAME**  
LVT Series 2 - STONESET
- SIZE**  
12” x 24”
- OVERALL GAUGE**  
3.0 mm
- WEAR LAYER**  
0.5 mm
- FINISH**  
PUR™
- INSTALLATION**  
Glue Down
- PACKING**  
14 pcs = 28sf per box, 2.60kg per box

PRODUCT PERFORMANCE

- WEAR CLASSIFICATION**  
Commercial Grade Resilient Tile
- SUSTAINABILITY**  
FloorScore® Certified  
Commercial - Limited 10 year  
Residential - Limited 15 year
- TREATMENT**  
Anti-Bacterial within PUR™

- PACKING**  
14 pcs per box

METHOD OF INSTALLATION



Ashlar      Herringbone      Basketweave



LVTSS2030-10



LVTSS1903-32



LVTSS1903-03



LVTSS1903-09



LVTSS1925-01



LVTSS1925-03



# LVT SERIES 3

VND 391.000

## PRODUCT SPECIFICATIONS

**STYLE NAME**  
LVT Series 3 - WOODMIX

**SIZE**  
6" x 48"

**OVERALL GAUGE**  
3.0 mm

**WEAR LAYER**  
0.5 mm

**FINISH**  
PUR™

**INSTALLATION**  
Glue Down

**PACKING**  
14 pcs = 28sf per box, 2.60kg per box

## PRODUCT PERFORMANCE

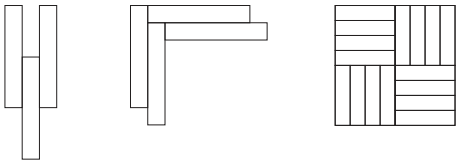
**WEAR CLASSIFICATION**  
Commercial Grade Resilient Tile

**SUSTAINABILITY**  
FloorScore® Certified  
Commercial - Limited 10 year  
Residential - Limited 15 year

**TREATMENT**  
Anti-Bacterial within PUR™

**PACKING**  
14 pcs per box

## METHOD OF INSTALLATION



Ashlar      Herringbone      Basketweave



LVTWM2022-09



LVTWM2070-34



LVTWM3010-34



LVTWM5040-34



LVTWM3020-34



LVTWM3040-34



# LVT SERIES 4

VND 562.000

## PRODUCT SPECIFICATIONS

- STYLE NAME**  
LVT Series 4 - SPC CLICK
- SIZE**  
7" x 48"
- SPC CORE**  
4.5 mm
- IXPE PAD**  
1.5 mm
- WEAR LAYER**  
0.5 mm
- FINISH**  
PUR™
- INSTALLATION**  
Click System
- PACKING**  
10 pcs = 23.20sf per box, 2.17kg per box

## PRODUCT PERFORMANCE

- WEAR CLASSIFICATION**  
Commercial Grade Resilient Tile
- SUSTAINABILITY**  
FloorScore® Certified  
Commercial - Limited 10 year  
Residential - Limited 15 year

- TREATMENT**  
Anti-Bacterial within PUR™

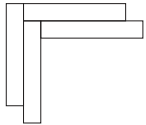
- PACKING**  
10 pcs per box



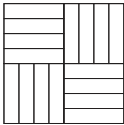
## METHOD OF INSTALLATION



Ashlar



Herringbone



Basketweave



SPC LAUREL - 336 - 05



SPC REDWOOD - 323 - 07





# **TRIOFLOR<sup>®</sup>**

COLLECTION

## Homogeneous





**Mars™**

Homogeneous Floor



SS-8751



SS-8770



SS-8765



SS-8771



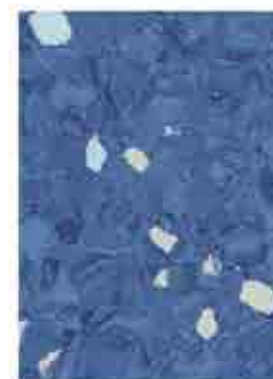
SS-8788



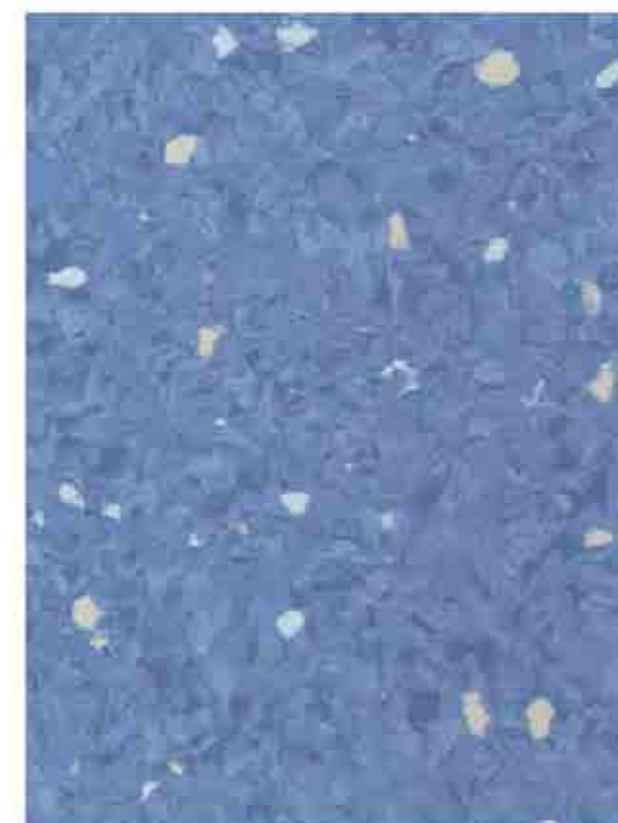
SS-8782



SS-8790



SS-8766



SS-8765



SS-8789



SS-8779



SS-8780



SS-8781



VND 356.000



**Mars™**



SS-8775



SS-8772



SS-8778



SS-8776



SS-8761



SS-8757



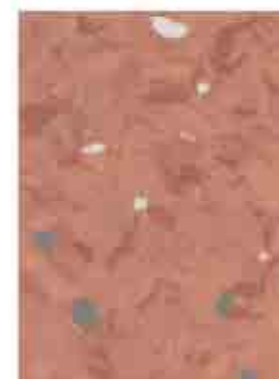
SS-8758



SS-8759



SS-8783



SS-8787



SS-8760



SS-8773



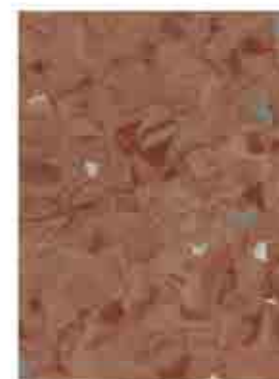
SS-8756



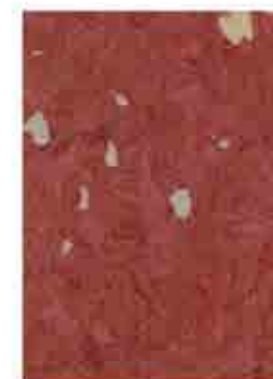
SS-8774



SS-8754



SS-8762



SS-8742



SS-8784



SS-8785



SS-8755



SS-8786



SS-8743



SS-8744

## SIX TYPES OF MEDICAL CLEAN SPACES HAVE FOUR MAJOR CLEANSING NEEDS



## A NEW GENERATION OF ENVIRONMENTALLY FRIENDLY PLASTICIZERS

WITH THE CONCEPT OF HEALTH, SAFETY AND ENVIRONMENTAL PROTECTION, WE WILL CONTINUE TO OPTIMIZE AND IMPROVE THE RAW MATERIAL FORMULA OF PVC FLOORING PRODUCTS. THE PRODUCTS USE THE NEW GENERATION OF ENVIRONMENTALLY FRIENDLY PLASTICIZER WHICH: THE ONLY PLASTICIZER IN THE INDUSTRY THAT DOES NOT CONTAIN PHTHALATE (PHT) AND ENDANGERS HUMAN HEALTH. THE ONLY PLASTICIZER IN THE INDUSTRY THAT IS SUITABLE FOR BOTH CHILDREN'S TOYS AND CONTACT PRODUCTS.

## LOWEST VOC RELEASE

VOC IS A GENERAL TERM FOR VOLATILE ORGANIC COMPOUNDS, MAINLY DERIVED FROM THE RELEASE OF FUEL/EXPLOSIVE PRODUCTS AND ARTIFACTS (SUCH AS INTERIOR DECORATION MATERIALS, PAINTS, FURNITURE, FLOORING, ETC.). THE VOC RELEASE OF THE PRODUCT IS NEARLY ZERO, WHICH IS IN THE BEST LEVEL IN THE INDUSTRY TO ENSURE THE OPTIMAL INDOOR AIR QUALITY. IT IS NOT EASY TO MAINTAIN A WORLD-CLASS LEVEL AND BECOME A SUSTAINABLE COMPANY, BUT IT IS NOT DIFFICULT TO ACHIEVE. IN THE COURSE OF MORE THAN A DECADE OF DEVELOPMENT, WE HAVE ALWAYS BEEN A LEADER IN NEW PRODUCT DEVELOPMENT, PROCESS IMPROVEMENT AND ENVIRONMENTALLY FRIENDLY FLOORING MANUFACTURING AND APPLICATION, AND HAVE ACHIEVED SUSTAINABLE DEVELOPMENT GOALS.





## Mars™

TrioFlor Mars collection is a flexible homogeneous pressed compacted covering in sheet, with non-directional design color dyed as a raw mixture to ensure throughout the thickness. Its surface is densely compacted for improved wear resistance and easy maintenance. It benefits from PUR surface treatment with excellent characteristics like scratch resistance and chemicals resistance (such as iodine, gentian violet or hand sanitizer).

TrioFlor Mars collection features bacteriostatic and fungistatic treatment. The flooring complies with the EN649(33-43) and has a GROUP T wear rating. It is suitable for heavy traffic areas.

### Description

Total thickness	EN428	mm	2
Density	EN430	g/ m <sup>2</sup>	2950
Width/Length of sheet	EN426	m/m	2/20

### Classification

European classification	EN649	class	34/43
Fire rating	EN13501-1	class	Bfl-s1
	GB8624-2012	-	Bfl-s1
Toxic testing	GB18586-2001	-	合格
Static electrical propensity	EN1815	KV	< 2
Electrical resistance	EN1081	Ω	109- 1010
Slip resistance dry	EN13893	-	≥ 0.3
Slip resistance wet	DIN51130	class	R9

### Performance

Abrasion resistance	EN660.2	mm <sup>3</sup>	≤ 4.0
Abrasion group	EN649	group	T
Dimensional stability	EN434	%	≤ 0.4
Residual indentation	EN433	mm	≈ 0.03
Castor chair test	EN425	-	OK
Thermal conductivity	EN12524	w/(m.k)	≈ 0.25
Colour fastness	ISO105-B02	degree	≥ 6
Chemical products resistance	EN423	-	OK
Anti-bacterial and fungicidal treatment	-	-	OK
Special maintenance treatment	-	µg/m <sup>3</sup>	PUR Protect
Tvoc after 28 days	ISO16000-6	-	< 10
Colour number	-	-	36

### CE marking

	EN14041	-	
--	---------	---	--



# Mercury™

## Homogeneous Floor



SS-8675



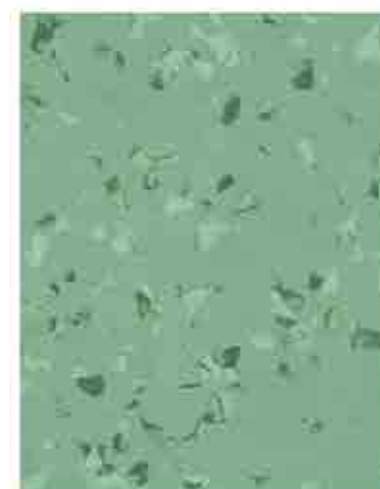
SS-8657



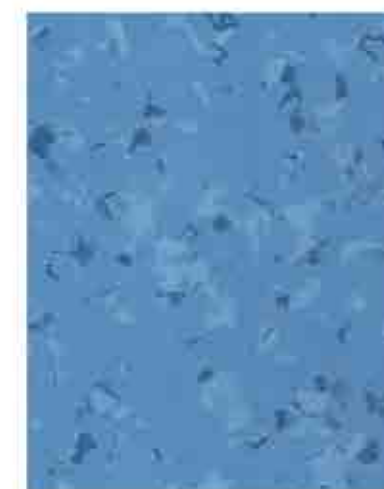
SS-8668



SS-8685



SS-8647



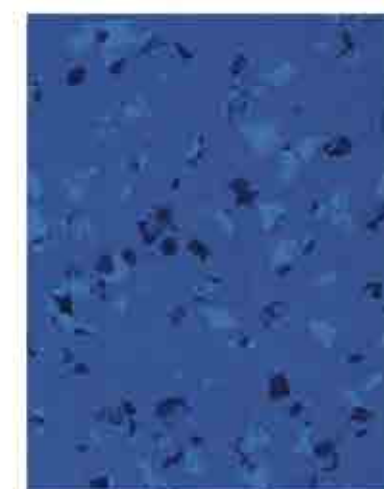
SS-8666



SS-8622



SS-8632



SS-8656



VND 356.000

VND 356.000



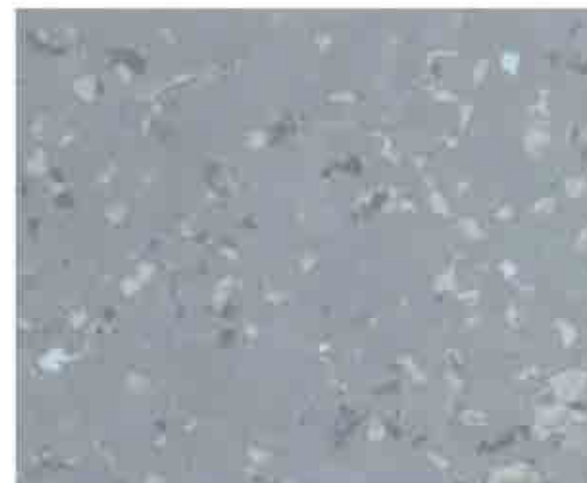
SS-8630



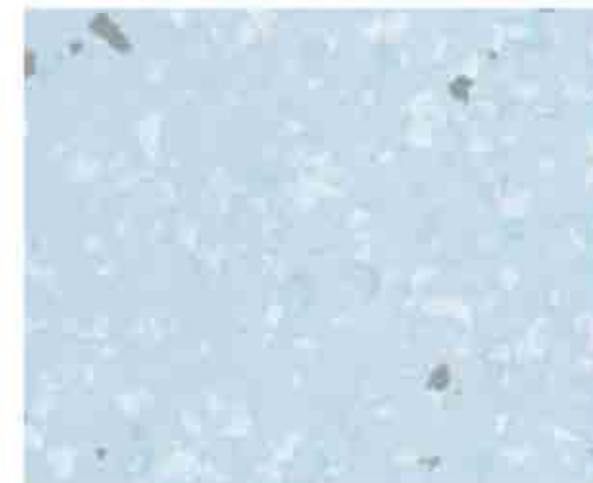
SS-8654



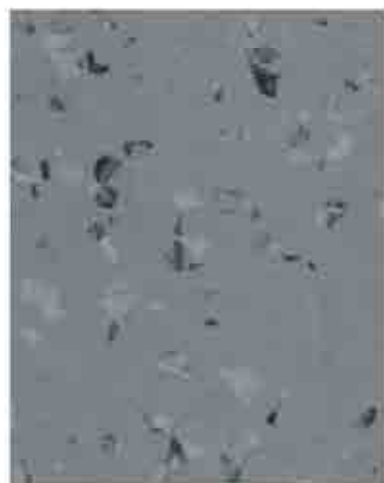
SS-8624



SS-8620



SS-8606



SS-8650



SS-8641



SS-8605



SS-8629



SS-8610



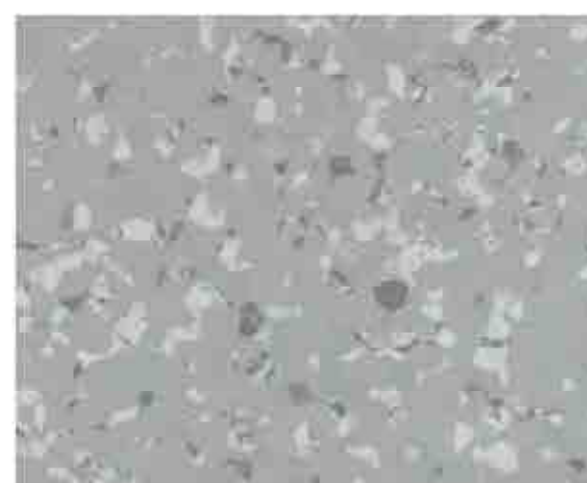
SS-8660



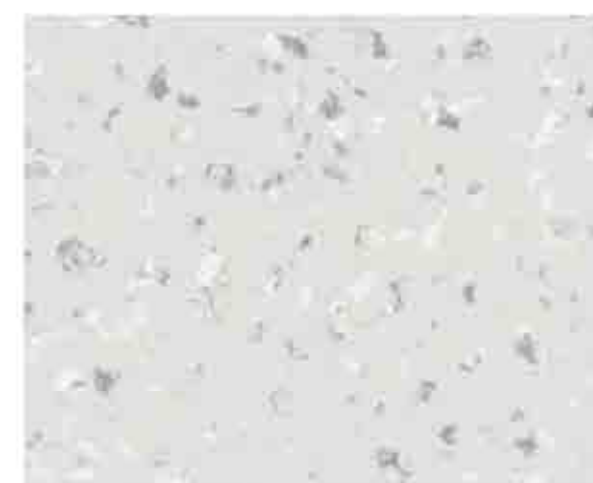
SS-8663



SS-8603



SS-8640



SS-8612





# Mercury™

TrioFlor Mercury collection is a flexible homogeneous pressed compacted covering in sheet, with non-directional design color dyed as a raw mixture to ensure throughout the thickness. Its surface is densely compacted for improved wear resistance and easy maintenance. It benefits from PUR surface treatment with excellent characteristics like scratch resistance and chemicals resistance (such as iodine, gentian violet or hand sanitizer).

TrioFlor Mercury collection features bacteriostatic and fungistatic treatment. The flooring complies with the EN649(33-43) and has a GROUP T wear rating. It is suitable for heavy traffic areas.

## Description

Total thickness	EN428	mm	2
Density	EN430	g/ m <sup>2</sup>	2850
Width/Length of sheet	EN426	m/m	2/20

## Classification

European classification	EN649	class	34/43
Fire rating	EN13501-1	class	Bfl-s1
	GB8624-2012	-	Bfl-s1
Toxic testing	GB18586-2001	-	合格
Static electrical propensity	EN1815	KV	< 2
Electrical resistance	EN1081	Ω	109- 1010
Slip resistance dry	EN13893	-	≥ 0.3
Slip resistance wet	DIN51130	class	R9

## Performance

Abrasion resistance	EN660.2	mm <sup>3</sup>	≤ 4.0
Abrasion group	EN649	group	T
Dimensional stability	EN434	%	≤ 0.4
Residual indentation	EN433	mm	≈ 0.03
Castor chair test	EN425	-	OK
Thermal conductivity	EN12524	w/(m.k)	≈ 0.25
Colour fastness	ISO105-B02	degree	≥ 6
Chemical products resistance	EN423	-	OK
Anti-bacterial and fungicidal treatment	-	-	OK
Special maintenance treatment	-	μg/m <sup>3</sup>	PUR Protect
Tvoc after 28 days	ISO16000-6	-	< 10
Colour number	-	-	24

## CE marking

	EN14041	-	
--	---------	---	--



# Saturn™

## Homogeneous Floor



# Saturn™



① PUR protect special maintenance treatment

② Compacted homogenous floor covering

- ☐ High performance flexible homogenous multipurpose flooring
- ☐ PUR protect special maintenance treatment easy of maintenance
- ☐ Densely compacted surface for improved wear and ease of maintenance
- ☐ Incorporates a bacteriostatic and fungistatic property
- ☐ NO-Dirctional polychrome design, available ina large choice of 35 contemporary colors

**VND 356.000**



SS-5855



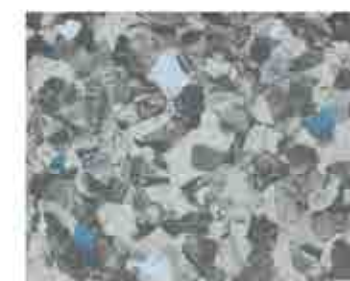
SS-5853



SS-5858



SS-5854



SS-5851



VND 356.000



SS-5875



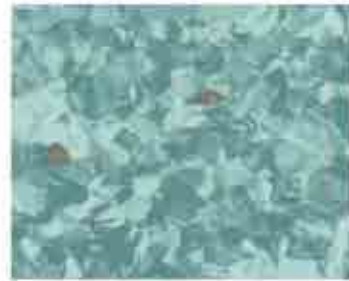
SS-5870



SS-5863



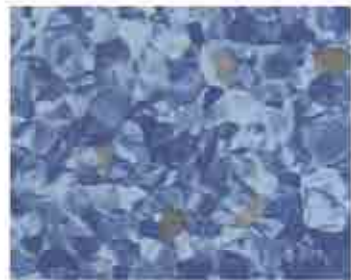
SS-5869



SS-5866



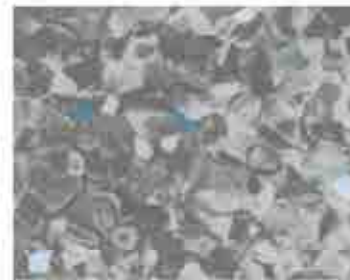
SS-5865



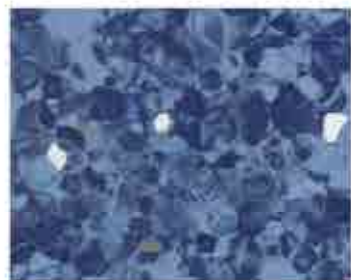
SS-5881



SS-5868



SS-5876



SS-5867



SS-5882



SS-5864



SS-5852



SS-5856



SS-5850

VND 356.000



SS-5862



SS-5883



SS-5871



SS-5861



SS-5873



SS-5872



SS-5884



SS-5879



SS-5874



SS-5877



SS-5878



SS-5880



SS-5859



SS-5860



SS-5857





# Saturn™

TrioFlor Saturn collection is a flexible homogeneous pressed compacted covering in sheet, with non-directional design color dyed as a raw mixture to ensure throughout the thickness. Its surface is densely compacted for improved wear resistance and easy maintenance. It benefits from PUR surface treatment with excellent characteristics like scratch resistance and chemicals resistance (such as iodine, gentian violet or hand sanitizer).

TrioFlor Saturn collection features bacteriostatic and fungistatic treatment. The flooring complies with the EN649(33-43) and has a GROUP T wear rating. It is suitable for heavy traffic areas.

Description			
Total thickness	EN428	mm	2
Density	EN430	g/ m <sup>2</sup>	2850
Width/Length of sheet	EN426	m/m	2/20
Classification			
European classification	EN649	class	34/43
Fire rating	EN13501-1	class	Bfl-s1
	GB8624-2012	-	Bfl-s1
Toxic testing	GB18586-2001	-	合格
Static electrical propensity	EN1815	KV	< 2
Electrical resistance	EN1081	Ω	109- 1010
Slip resistance dry	EN13893	-	≥ 0.3
Slip resistance wet	DIN51130	class	R9
Performance			
Abrasion resistance	EN660.2	mm <sup>3</sup>	≤ 4.0
Abrasion group	EN649	group	T
Dimensional stability	EN434	%	≤ 0.4
Residual indentation	EN433	mm	≈ 0.03
Castor chair test	EN425	-	OK
Thermal conductivity	EN12524	w/(m.k)	≈ 0.25
Colour fastness	ISO105-B02	degree	≥ 6
Chemical products resistance	EN423	-	OK
Anti-bacterial and fungicidal treatment	-	-	OK
Special maintenance treatment	-	µg/m <sup>3</sup>	PUR Protect
Tvoc after 28 days	ISO16000-6	-	< 10
Colour number	-	-	35
CE marking			
	EN14041	-	



**Venus**™

Homogeneous Floor



SS-90038



SS-90039



SS-90040



SS-90035



SS-90014



SS-90012



SS-90649



SS-90010



SS-90011



VND 356.000



SS-90026



SS-90645



SS-90646



SS-90648



SS-90036



SS-90004



SS-90005



SS-90037



SS-90018

VND 356.000



SS-90062



SS-90647



SS-90065



SS-90008



SS-90056



SS-90067



SS-90730



SS-90016



SS-90731





## Venus™

TrioFlor Venus collection is a flexible homogeneous pressed compacted covering in sheet, with non-directional design color dyed as a raw mixture to ensure throughout the thickness. Its surface is densely compacted for improved wear resistance and easy maintenance. It benefits from PUR surface treatment with excellent characteristics like scratch resistance and chemicals resistance (such as iodine, gentian violet or hand sanitizer).

TrioFlor Venus collection features bacteriostatic and fungistatic treatment. The flooring complies with the EN649(33-43) and has a GROUP T wear rating. It is suitable for heavy traffic areas.

### Description

Total thickness	EN428	mm	2
Density	EN430	g/ m <sup>2</sup>	2850
Width/Length of sheet	EN426	m/m	2/20

### Classification

European classification	EN649	class	34/43
Fire rating	EN13501-1	class	Bfl-s1
	GB8624-2012	-	Bfl-s1
Toxic testing	GB18586-2001	-	合格
Static electrical propensity	EN1815	KV	< 2
Electrical resistance	EN1081	Ω	109- 1010
Slip resistance dry	EN13893	-	≥ 0.3
Slip resistance wet	DIN51130	class	R9

### Performance

Abrasion resistance	EN660.2	mm <sup>3</sup>	≤ 4.0
Abrasion group	EN649	group	T
Dimensional stability	EN434	%	≤ 0.4
Residual indentation	EN433	mm	≈ 0.03
Castor chair test	EN425	-	OK
Thermal conductivity	EN12524	w/(m.k)	≈ 0.25
Colour fastness	ISO105-B02	degree	≥ 6
Chemical products resistance	EN423	-	OK
Anti-bacterial and fungicidal treatment	-	-	OK
Special maintenance treatment	-	μg/m <sup>3</sup>	PUR Protect
Tvoc after 28 days	ISO16000-6	-	< 10
Colour number	-	-	27

### CE marking

	EN14041	-	
--	---------	---	--



# Clown fish™

## Heterogenous Floor

Heterogenous Floor



**Clown fish™**

### INSTALLATION

Installation should be carried out in accordance with local standards. Subfloor should be smooth, hard, clean and dry prior to laying. If necessary, the subfloor must incorporate an effective damp proof membrane. The material must be allowed to acclimatize 24 hours before installation in a room temperature of between 18-24 °C.

### MAINTENANCE

An emulsion dressing is required. Maintenance should be carried out regularly to retain the appearance durability of the floor. The floorcovering should be maintained with regular sweeping and damp mopping using a neutral cleanset. More intense cleaning should be carried out using a fine spray cleaning pad under a floor machine, or for larger areas combined machine cleaning.

### FEATURE

- Excellent durability and wear resistance to heavy traffic and abrasion: Adopting the thick wear layer and the special U.V coating .
- No wax is needed for U.V coating
- Excellent stain resistance and easy cleaning: Adopting the special U.V coating
- Strong antibacterial function: Sanitized treatment with nano-silver technique.
- Dimensional stability : Adopting the special glass fiber



CF-1170





VND 230.000



CF-1171



CF-1172



CF-1173



CF-1174



CF-1175



CF-1176



CF-1177



CF-1178



CF-1179



# Clown fish™

## PROFESSIONAL SAFETY AND ENVIRONMENTAL PROTECTION

### PRODUCT STANDARD & CHARACTERISTICS

Characteristics	Standard	Unit	Result
Type of floor covering	EN 649		Heterogeneous sheet
Material			Polyvinyl chloride
Performance			
Fire rating	GB 8624-2006	class	BF1
Slip resistance	BGR 181	group	R9
Dynamic coefficient of friction	EN 13893	class	DS
Impact sound insulation	ISO 140-8 GB/T 11982.1-1989	dB	10
Performance			
Width of sheet	EN 426	m	2.0
Length of sheet	EN 426	m	20
Total thickness	EN 428	mm	2.0
Thickness of wear layer	EN 429	mm	0.35
Density	EN 430	Kg/ m <sup>3</sup>	3.5±10%
Residual indentation	EN 433	mm	0.08
Dimensional stability	EM 434	-	0.05%
Color fastness	ISO 105-B02	rating	≥ 6
Abrasion group	EN 649	group	T
Thermal conductivity	EN 12524	W/Mk	0.25
Additional property			
Castor chair	✓	Underfloor heating	✓
Antistatic behaviour	✓	Chemical resistance	✓



# Jellyfish™

## Heterogenous Floor



**Jellyfish™**

### INSTALLATION

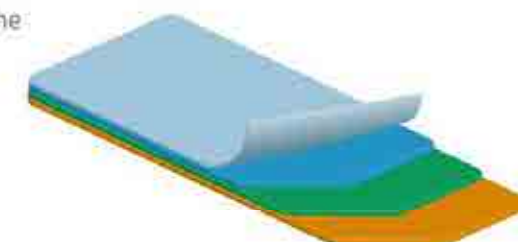
Installation should be carried out in accordance with local standards. Subfloor should be smooth, hard, clean and dry prior to laying. If necessary, the subfloor must incorporate an effective damp proof membrane. The material must be allowed to acclimatize 24 hours before installation in a room temperature of between 18-24 °C.

### MAINTENANCE

An emulsion dressing is required. Maintenance should be carried out regularly to retain the appearance durability of the floor. The floorcovering should be maintained with regular sweeping and damp mopping using a neutral cleanset. More intense cleaning should be carried out using a fine spray cleaning pad under a floor machine, or for larger areas combined machine cleaning.

### FEATURE

- Excellent durability and wear resistance to heavy traffic and abrasion: Adopting the thick wear layer and the special U.V coating .
- No wax is needed for U.V coating
- Excellent stain resistance and easy cleaning: Adopting the special U.V coating
- Strong antibacterial function: Sanitized treatment with nano-silver technique.
- Dimensional stability : Adopting the special glass fiber



JF-0930



JF-0931



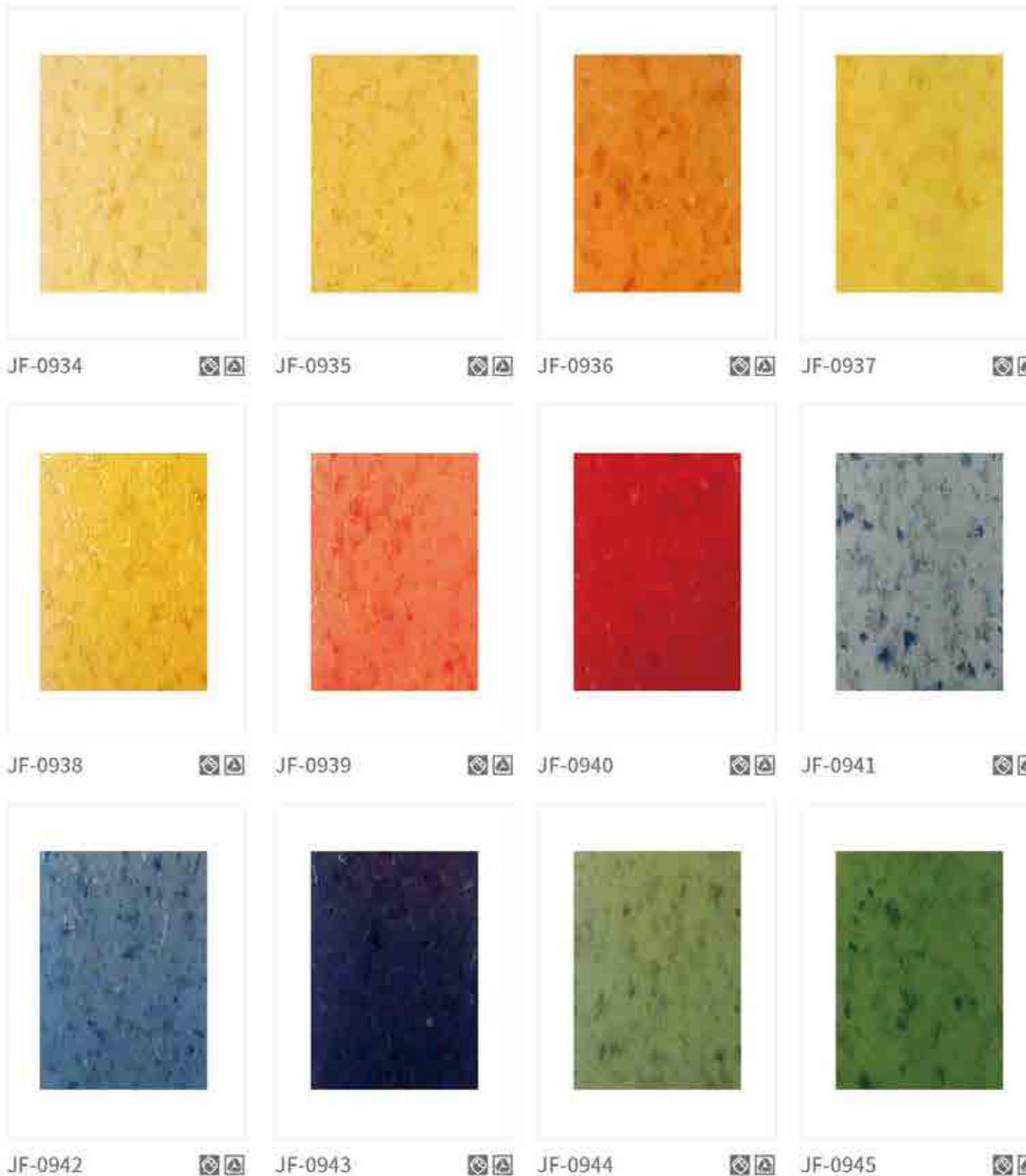
JF-0932



JF-0933







## PROFESSIONAL SAFETY AND ENVIRONMENTAL PROTECTION

### PRODUCT STANDARD & CHARACTERISTICS

Characteristics	Standard	Unit	Result
Type of floor covering	EN 649		Heterogeneous sheet
Material			Polyvinyl chloride
Performance			
Fire rating	GB 8624-2006	class	BF1
Slip resistance	BGR 181	group	R9
Dynamic coefficient of friction	EN 13893	class	DS
Impact sound insulation	ISO 140-8 GB/T 11982.1-1989	dB	10
Performance			
Width of sheet	EN 426	m	2.0
Length of sheet	EN 426	m	20
Total thickness	EN 428	mm	2.0
Thickness of wear layer	EN 429	mm	0.35
Density	EN 430	Kg/ m <sup>3</sup>	3.5±10%
Residual indentation	EN 433	mm	0.08
Dimensional stability	EM 434	-	0.05%
Color fastness	ISO 105-B02	rating	≥ 6
Abrasion group	EN 649	group	T
Thermal conductivity	EN 12524	W/Mk	0.25
Additional property			
Castor chair	✓	Underfloor heating	✓
Antistatic behaviour	✓	Chemical resistance	✓



# Lion fish™

## Heterogenous Floor



**Lion fish™**

### INSTALLATION

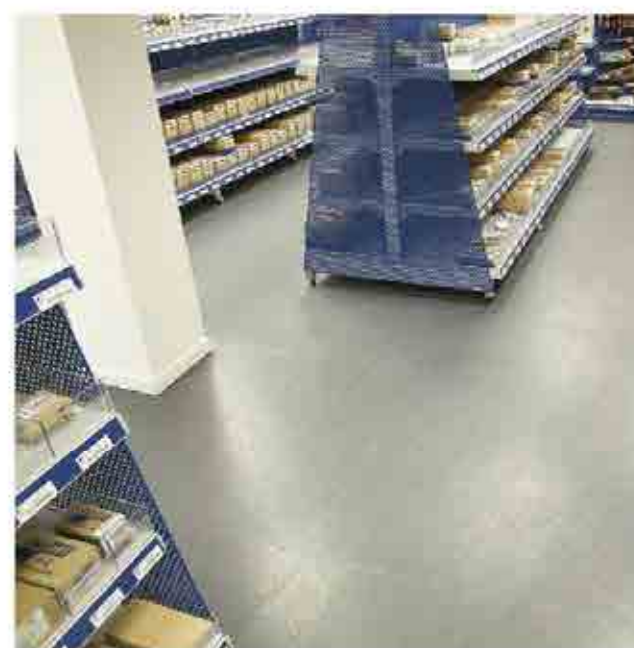
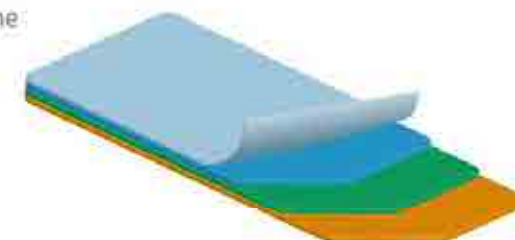
Installation should be carried out in accordance with local standards. Subfloor should be smooth, hard, clean and dry prior to laying. If necessary, the subfloor must incorporate an effective damp proof membrane. The material must be allowed to acclimatize 24 hours before installation in a room temperature of between 18-24 °C.

### MAINTENANCE

An emulsion dressing is required. Maintenance should be carried out regularly to retain the appearance durability of the floor. The floorcovering should be maintained with regular sweeping and damp mopping using a neutral cleanset. More intense cleaning should be carried out using a fine spray cleaning pad under a floor machine, or for larger areas combined machine cleaning.

### FEATURE

- Excellent durability and wear resistance to heavy traffic and abrasion: Adopting the thick wear layer and the special U.V coating .
- No wax is needed for U.V coating
- Excellent stain resistance and easy cleaning: Adopting the special U.V coating
- Strong antibacterial function: Sanitized treatment with nano-silver technique.
- Dimensional stability : Adopting the special glass fiber



LF-6801





## PROFESSIONAL SAFETY AND ENVIRONMENTAL PROTECTION

### PRODUCT STANDARD & CHARACTERISTICS



Characteristics	Standard	Unit	Result
Type of floor covering	EN 649		Heterogeneous sheet
Material			Polyvinyl chloride
Performance			
Fire rating	GB 8624-2006	class	BF1
Slip resistance	BGR 181	group	R9
Dynamic coefficient of friction	EN 13893	class	DS
Impact sound insulation	ISO 140-8 GB/T 11982.1-1989	dB	10
Performance			
Width of sheet	EN 426	m	2.0
Length of sheet	EN 426	m	20
Total thickness	EN 428	mm	2.0
Thickness of wear layer	EN 429	mm	0.35
Density	EN 430	Kg/ m <sup>2</sup>	3.5±10%
Residual indentation	EN 433	mm	0.08
Dimensional stability	EM 434	-	0.05%
Color fastness	ISO 105-B02	rating	≥ 6
Abrasion group	EN 649	group	T
Thermal conductivity	EN 12524	W/Mk	0.25
Additional property			
Castor chair	✓	Underfloor heating	✓
Antistatic behaviour	✓	Chemical resistance	✓



# Thalassian™

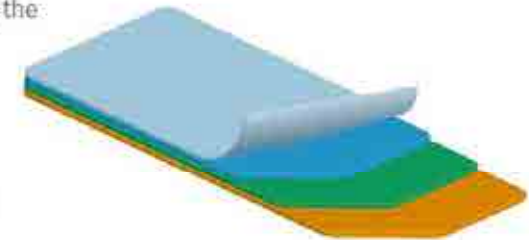
## Heterogenous Floor



**Thalassian™**

### FEATURE

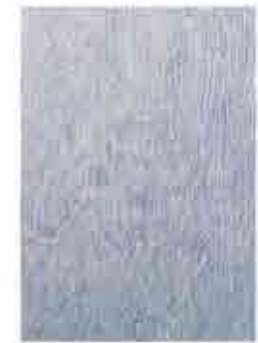
- Excellent durability and wear resistance to heavy traffic and abrasion: Adopting the thick wear layer and the special U.V coating.
- No wax is needed for U.V coating
- Excellent stain resistance and easy cleaning: Adopting the special U.V coating.
- Strong antibacterial function: Sanitized treatment with nano-silver technique.
- Dimensional stability : Adopting the special glass fiber



T-2601



T-2602



T-2603



T-2604



T-2605

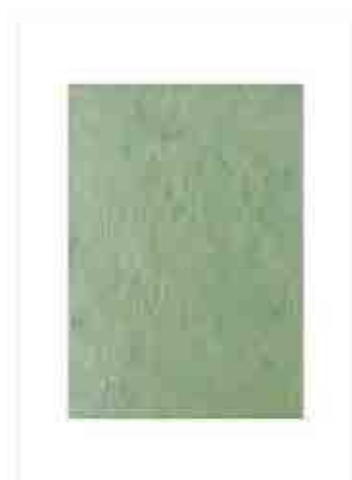


T-2606





VND 270.000



T-2607



T-2608



T-2609



T-2610



T-2612



T-2613



T-2614



T-2615

# Thalassian™

## PROFESSIONAL SAFETY AND ENVIRONMENTAL PROTECTION

### PRODUCT STANDARD & CHARACTERISTICS

Characteristics	Standard	Unit	Result
Type of floor covering	EN 649		Heterogeneous sheet
Material			Polyvinyl chloride
Performance			
Fire rating	GB 8624-2006	class	BF1
Slip resistance	BGR 181	group	R9
Dynamic coefficient of friction	EN 13893	class	DS
Impact sound insulation	ISO 140-8 GB/T 11982.1-1989	dB	10
Performance			
Width of sheet	EN 426	m	2.0
Length of sheet	EN 426	m	15
Total thickness	EN 428	mm	2.6
Thickness of wear layer	EN 429	mm	0.5
Density	EN 430	Kg/ m <sup>3</sup>	2.6±10%
Residual indentation	EN 433	mm	0.08
Dimensional stability	EM 434	-	0.05%
Color fastness	ISO 105-B02	rating	≥ 6
Abrasion group	EN 649	group	T
Thermal conductivity	EN 12524	W/Mk	0.25
Additional property			
Castor chair	✓	Underfloor heating	✓
Antistatic behaviour	✓	Chemical resistance	✓



# Yellow tang™

## Heterogenous Floor



**Yellow tang™**

### INSTALLATION

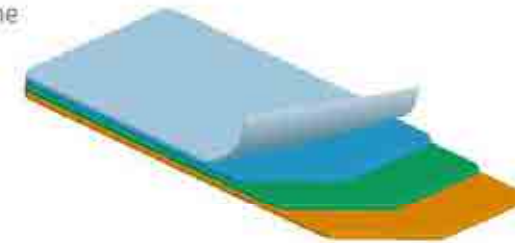
Installation should be carried out in accordance with local standards. Subfloor should be smooth, hard, clean and dry prior to laying. If necessary, the subfloor must incorporate an effective damp proof membrane. The material must be allowed to acclimatize 24 hours before installation in a room temperature of between 18-24 °C.

### MAINTENANCE

An emulsion dressing is required. Maintenance should be carried out regularly to retain the appearance durability of the floor. The floorcovering should be maintained with regular sweeping and damp mopping using a neutral cleanset. More intense cleaning should be carried out using a fine spray cleaning pad under a floor machine, or for larger areas combined machine cleaning.

### FEATURE

- Excellent durability and wear resistance to heavy traffic and abrasion: Adopting the thick wear layer and the special U.V coating .
- No wax is needed for U.V coating
- Excellent stain resistance and easy cleaning: Adopting the special U.V coating
- Strong antibacterial function: Sanitized treatment with nano-silver technique.
- Dimensional stability : Adopting the special glass fiber



YT-2001



YT-2002





## PROFESSIONAL SAFETY AND ENVIRONMENTAL PROTECTION

### PRODUCT STANDARD & CHARACTERISTICS



Characteristics	Standard	Unit	Result
Type of floor covering	EN 649		Heterogeneous sheet
Material			Polyvinyl chloride
Performance			
Fire rating	GB 8624-2006	class	BF1
Slip resistance	BGR 181	group	R9
Dynamic coefficient of friction	EN 13893	class	DS
Impact sound insulation	ISO 140-8 GB/T 11982.1-1989	dB	10
Performance			
Width of sheet	EN 426	m	2.0
Length of sheet	EN 426	m	20
Total thickness	EN 428	mm	2.0
Thickness of wear layer	EN 429	mm	0.35
Density	EN 430	Kg/ m <sup>2</sup>	1.9±10%
Residual indentation	EN 433	mm	0.08
Dimensional stability	EM 434	-	0.05%
Color fastness	ISO 105-B02	rating	≥ 6
Abrasion group	EN 649	group	T
Thermal conductivity	EN 12524	W/Mk	0.25
Additional property			
Castor chair	✓	Underfloor heating	✓
Antistatic behaviour	✓	Chemical resistance	✓



## **COLORDOT COLLECTION**

Available in 7 styles with a total of 69 color variety  
Minimum order quantity will be 300 sqm per style and color



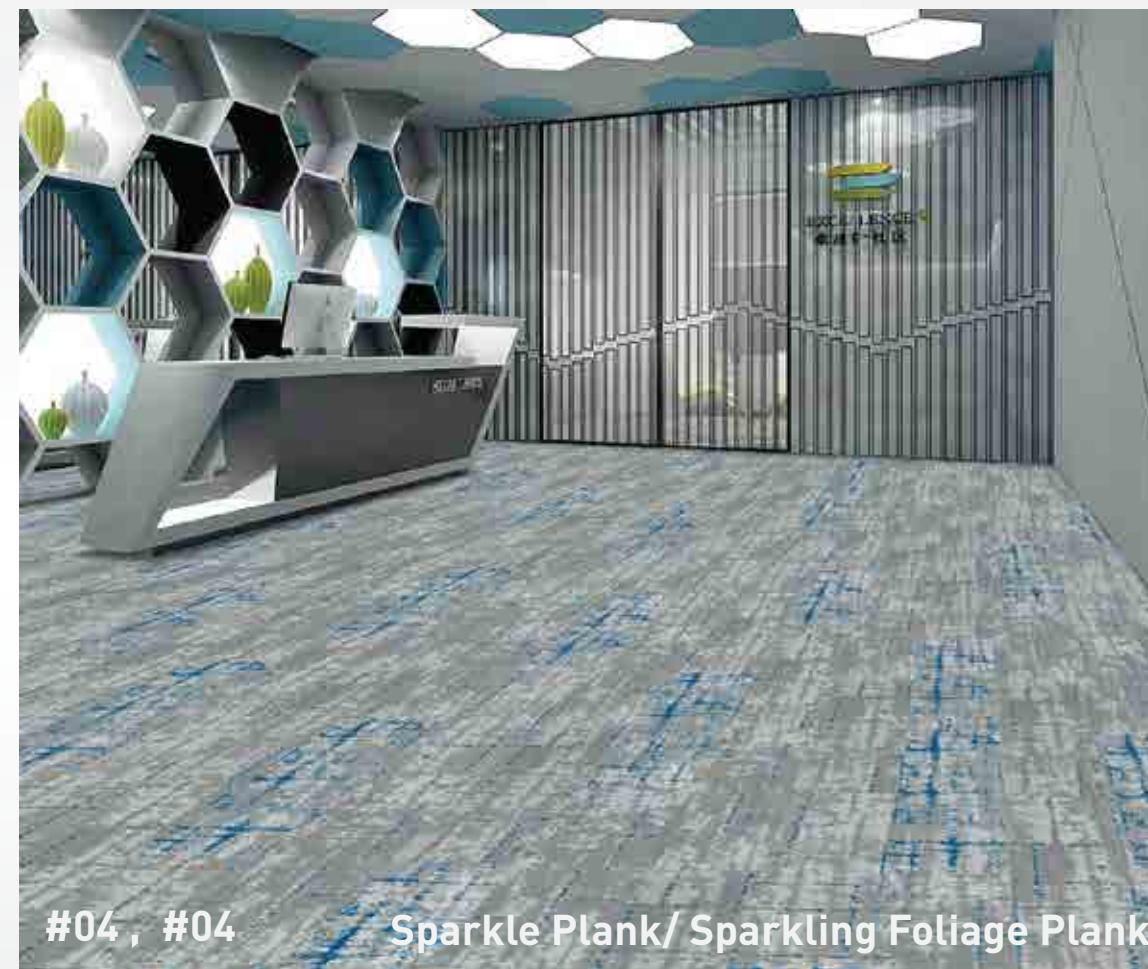
*Foliage plank*  
*Sparkle plank*  
*Sparkling Foliage plank*

Style	: <b>FOLIAGE Plank</b>
Construction	: Tip Shear
Fiber	: 100% Universal Nylon 6
Stitches	: 11 per inch
Pile Height	: 5.0-8.0mm ( $\pm 0.5$ mm)
Pile Weight	: 23oz psy
Backing	: Hardback with fiberglass
Tile size	: 25cm*100cm
Packing	: 20pcs = 5 sm/box



#05 , #05

Sparkle Plank/ Sparkling Foliage Plank



#04 , #04

Sparkle Plank/ Sparkling Foliage Plank

Style	: <b>SPARKLE Plank</b>
Style	: <b>SPARKLING FOLIAGE Plank</b>
Construction	: Tip Shear
Fiber	: 100% Universal Nylon 6
Stitches	: 10 per inch
Pile Height	: 5.0-8.0mm ( $\pm 0.5$ mm)
Pile Weight	: 25oz psy
Backing	: Hardback with fiberglass
Tile size	: 25cm*100cm
Packing	: 20pcs = 5 sm/box



VND 750.000

**Foliage  
plank**

**Sparkle  
plank**



#01



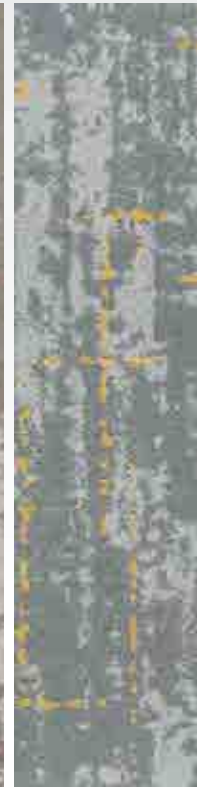
#02



#01



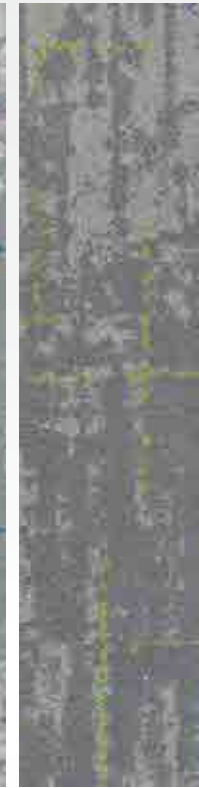
#02



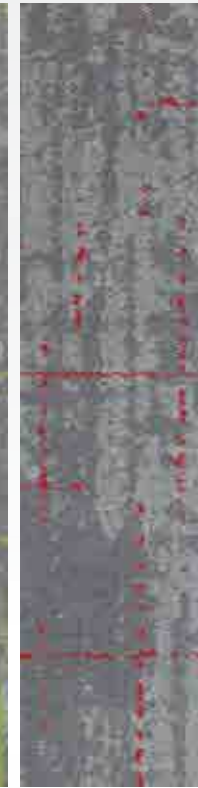
#03



#04



#05



#06



#07



#08

**Sparkling Foliage  
plank**



#03



#04



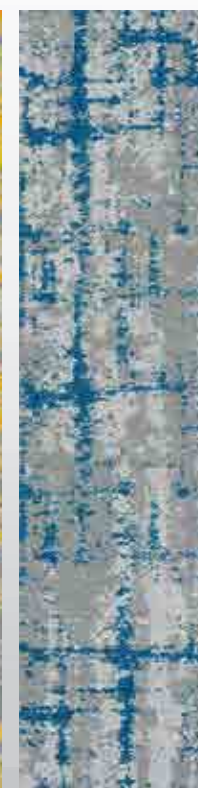
#01



#02



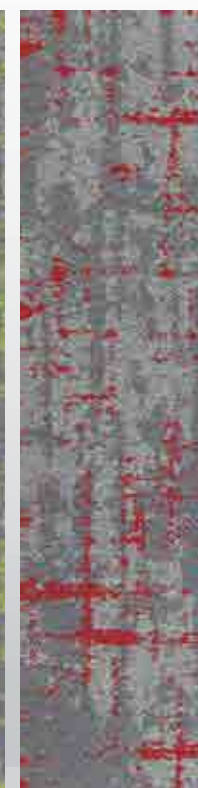
#03



#04



#05



#06



#07



#08





**Foliage plank / Sparkle plank /  
#04 , #07 , #08 Sparkling Foliage plank**



**Foliage plank / Sparkle plank /  
#02 , #05 , #06 Sparkling Foliage plank**





Foliage plank / Sparkle plank /  
#01 , #01 , #02 Sparkling Foliage plank



Foliage plank / Sparkle plank /  
#02 , #03 Sparkling Foliage plank



## Ridge Park plank Cloudy Ridge plank

Style	: <b>RIDGE PARK plank</b>
Construction	: Multi-Level Loop
Fiber	: 100% Plencolor Nylon 6
Stitches	: 9 per inch
Pile Height	: 6.0-8.0mm ( $\pm 0.5$ mm)
Pile Weight	: 21oz psy
Backing	: Hardback with fiberglass
Tile size	: 33.3cm*100cm
Packing	: 15pcs = 5 sm/box



Style	: <b>CLOUDY RIDGE plank</b>
Construction	: Multi-Level Loop
Fiber	: 100% Plencolor Nylon 6
Stitches	: 9 per inch
Pile Height	: 6.0-8.0mm ( $\pm 0.5$ mm)
Pile Weight	: 22oz psy
Backing	: Hardback with fiberglass
Tile size	: 33.3cm*100cm
Packing	: 15pcs = 5 sm/box



VND 720.000

**Ridge Park  
plank**



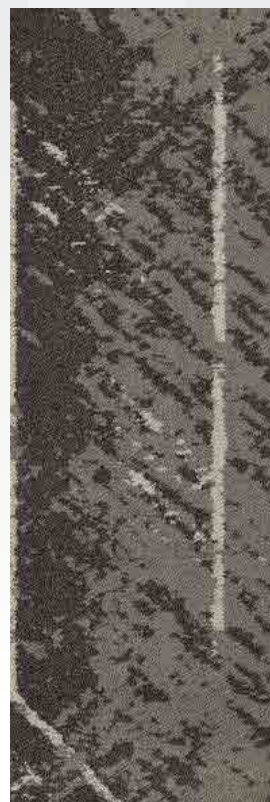
#01



#02



#03



#04



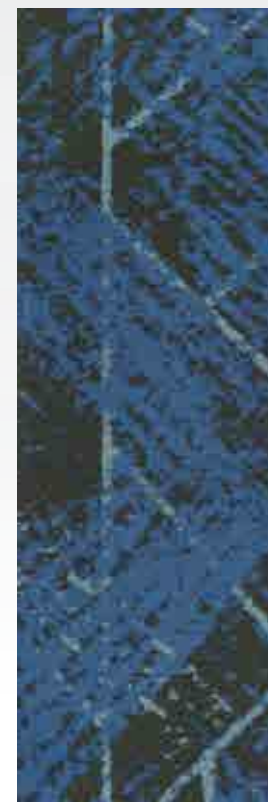
#05



#06



#07



#08



#01



#02



#03



#04



#05



#06



#07



#08

**Cloudy Ridge  
plank**













#04, #06, #02

Cloudy Ridge plank



#06

Ridge Park plank



## *Mellifluous plank*

Style	: <b>MELLIFLUOUS plank</b>
Construction	: Tip Shear
Fiber	: Vinicolor & Plencolor Nylon 6
Stitches	: 10per inch
Pile Height	: 5.5-7.5mm ( $\pm 0.5$ mm)
Pile Weight	: 31oz psy
Backing	: Hardback with fiberglass
Tile size	: 25cm*100cm
Packing	: 16pcs = 4 sm/box

**VND 700.000**



#01



#02



#09



#10



#03



#04



#11



#12



#05



#06



#13



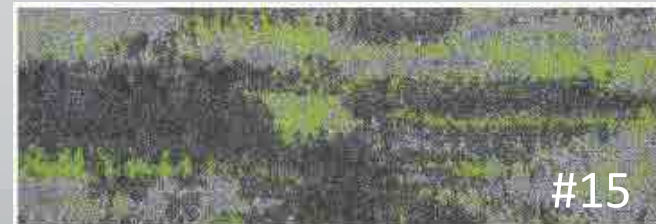
#14



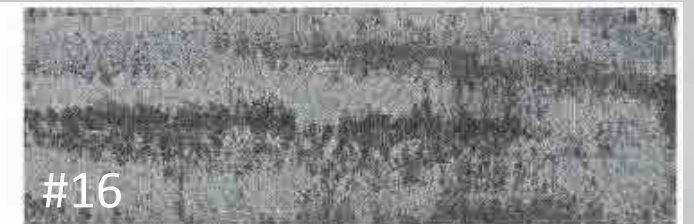
#07



#08



#15



#16



#01, #02, #03, #04

Mellifluous plank





#09 , #10 , #11 , #12

Mellifluous plank





#13, #14, #15, #16

Mellifluous plank



#12

Mellifluous plank



## Natural Evolution plank

Style	: <b>NATURAL EVOLUTION plank</b>
Construction	: Tip Shear
Fiber	: Vinicolor & Plencolor Nylon 6
Stitches	: 10per inch
Pile Height	: 5.5-7.5mm ( $\pm 0.5$ mm)
Pile Weight	: 31oz psy
Backing	: Hardback with fiberglass
Tile size	: 25cm*100cm
Packing	: 16pcs = 4 sm/box

**VND 700.000**



#01



#02



#09



#10



#03



#04



#11



#12



#05



#06



#13



#14



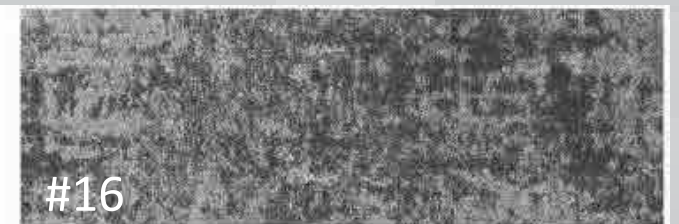
#07



#08



#015



#16





#01 , #02 , #03 , #04

Natural Evolution plank







# COLORDOT COLLECTION by The Most Innovative Tufting machine

Produced by a sophisticated tufting machine that could produce carpet with multiple colors, multiple pile heights, and a variety of textures and tip-sheared effects with no limits and scale in patterns.

This breakthrough technology allows the production of patterned carpet with no buried ends and pinpoint stitch accuracy for high definition detail and clarity

## Application areas

Contract

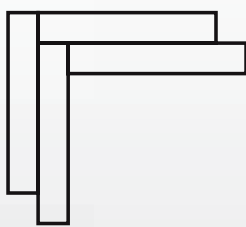
Hospitality

Residential

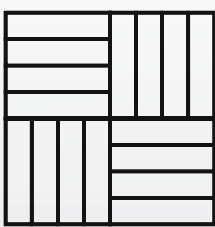
## Recommended Installation Direction



Ashlar



Herringbone



Basketweave



EXIT

EXIT

**[rongphuongbac.com](http://rongphuongbac.com)**

**Huynh Hon Hoa** ( Peter Huynh ) - 0902 913 465  
[hoa.huynh@rongphuongbac.com](mailto:hoa.huynh@rongphuongbac.com)

**Dang The Vy** ( Chris Dang ) - 0976 985 418  
[thevy.dang@rongphuongbac.com](mailto:thevy.dang@rongphuongbac.com)